



2024 Visitor's Guide



CENTRAL  MANITOBA
TOURISM

Adventure awaits!



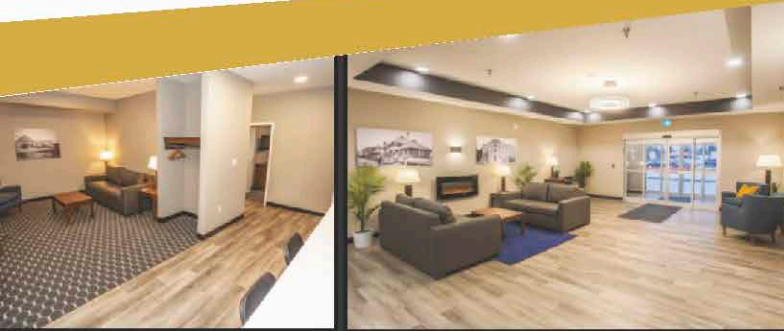
Blue Crescent HOTELS

Carman, MB

BIG CITY COMFORT,
SMALL TOWN HOSPITALITY

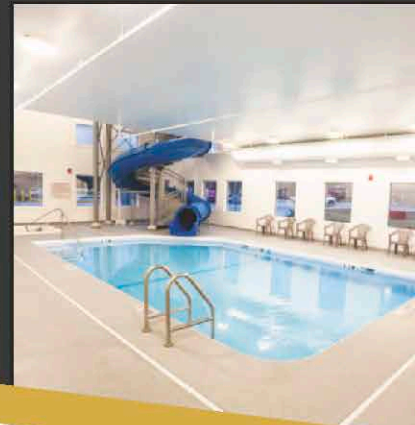
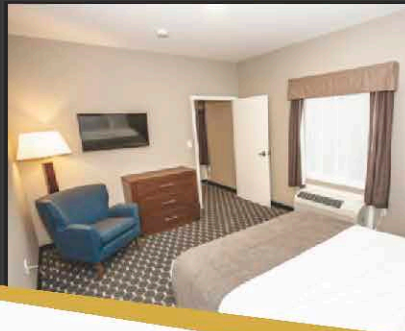
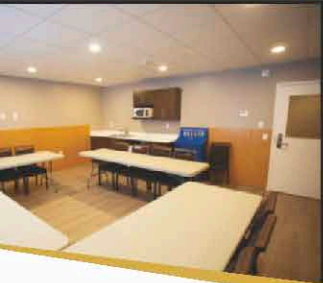
GOLF STAY & PLAY PACKAGES

Stay at the Blue Crescent
Hotel: Carman and play at
these courses:
Carman, Elm Creek,
Miami, Roland



- Continental Breakfast
- Variety of room designs

- Clean and comfortable
- Perfect for teams or tradespeople



1-855-420-0732

www.bluecrescent.ca



**CENTRAL MANITOBA
TOURISM**

The 2024 Central Manitoba
Visitor's Guide is published by

CENTRAL MANITOBA TOURISM

1-877-324-6645

gm@centralmbtourism.ca

www.centralmbtourism.ca

@CentralMBTourism



@CMBTourism



LAYOUT

Justin Friesen

PRINTING

Friesens Corporation



Visit our website!

CANADA'S HEART BEATS

Manitoba

Table of Contents

STAR ATTRACTIONS	4
ROADSIDE CURIOSITIES	8
MUNICIPAL HIGHLIGHTS	12
MAKING A SPLASH	24
SEE YOU AT THE FAIR	29
HISTORY COMES ALIVE	34
Museum Listing	41
THE NEW MERIDIAN EXHIBITION CENTRE	48
HIGH ADRENALINE ADVENTURES	50
FIND YOUR GROOVE	52
EXPERIENCE THE ARTS	56
GOLFING	60
18 Hole Courses	61
9 Hole Courses	62
CAMPING	64
YOU GOTTA EAT HERE	68
Restaurant Directory	72
FRESH FROM OUR FARM	80
Farmers Markets	81
NOT JUST FOR SUMMER	82
MAKE IT A WEEKEND	86
ACCOMMODATIONS	88
Hotels & Motels	88
Bed & Breakfasts	90
Cabins & Cottages	91
MAP	93



FOSSIL DIG TOURS SUMMER 2024!

Book your Summer
Adventure NOW!

discoverfossils.com



THE MORDEN **CORN & APPLE** FESTIVAL

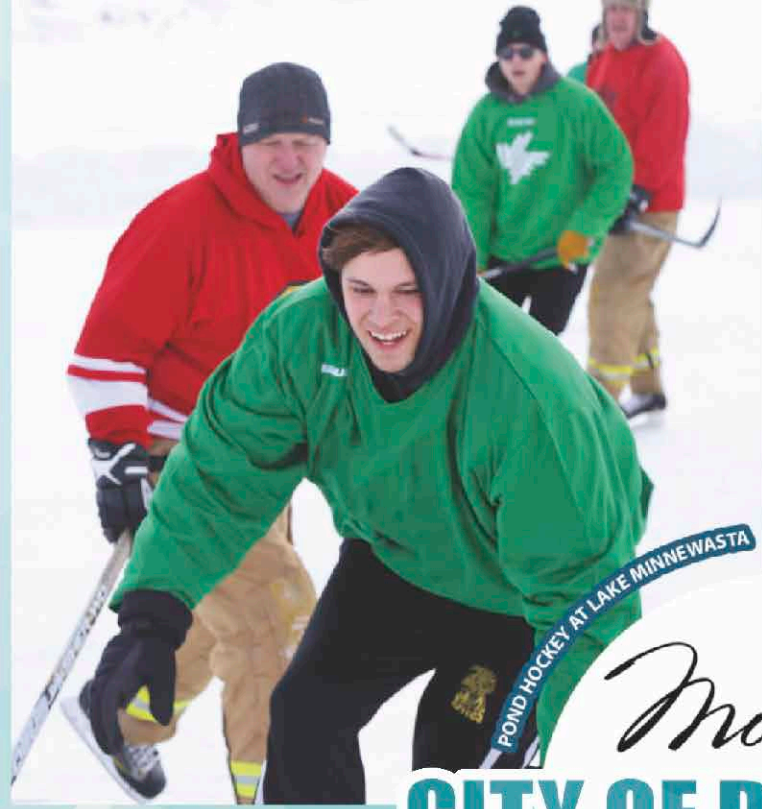
AUG 23 - 25, 2024

It's free. It's fun. It's for everyone!

cornandapple.com

 [CornandApple](https://www.facebook.com/CornandApple)

 [corn_n_apple](https://www.instagram.com/corn_n_apple)



POND HOCKEY AT LAKE MINNEWASTA



MANITOBA BASEBALL HALL OF FAME

Morden 
CITY OF DISCOVERY
mymorden.ca



MORDEN CORN & APPLE FESTIVAL

CANADIAN FOSSIL DISCOVERY CENTRE



Star Attractions

Manitoba's Star Attractions program includes 63 major tourism attractions across the province. From iconic destinations and historic hot spots to cultural centres and outdoor gathering spaces, keep your eyes open for Star Attractions signs as you travel to find these can't-miss stops. The Central region is home to four of these iconic experiences that we encourage you to visit.

The **Canadian Fossil Discovery Centre** in Morden is home to the largest collection of marine vertebrate fossils in Canada. Guests flock to here for a peek at the creatures that made their home here in the waters of what was the Western Interior Seaway during the Cretaceous Period from 80 million years ago. Be sure to visit "Bruce", the centre's most famed artifact — a 13 metre (43 foot) mosasaur declared by the Guinness Book of World records in 2014 as the world's largest skeleton of its kind. With more than 1,000 artifacts catalogued and new exhibits introduced regularly, discoveries await at this area destination. The centre offers guided tours, birthday party programming as well as summer programming and a venue for special events and receptions as well. Learn more at www.discoverfossils.com or phone 204-822-3406.

"Bruce"
Canadian Fossil
Discovery Centre,
Morden

Fort la Reine Museum,
Portage la Prairie

Portage la Prairie's **Fort la Reine Museum** celebrates 300 years of prairie settlement history in the heart of Canada. Explore all 28 heritage buildings and take part in a truly enriching experience that highlights the history of Western expansion and pioneering, the creation of the Canadian Pacific Railway, Canada's role in WWI and WWII, and how Canadian domestic life was shaped throughout the 20th century. This destination also proudly boasts the world's largest indoor collection of Allis Chalmers equipment, memorabilia, and other agricultural marvels. Take part in special events and cultural programs, or enjoy an educational tour provided by a living history interpreter. There is much to see at the Fort la Reine Museum. Find more at www.flrmuseum.com or phone 204-857-3259.

*Island Park,
Portage la Prairie*



Enveloped by five kilometres of Crescent Lake, Portage la Prairie's **Island Park** is a jewel at the heart of the City. This destination is home to the 18-hole Portage Golf Club, the Portage Exhibition

campground and event venues, tennis courts, disc golf, walking trails, wildlife habitat and more. The feature outdoor Water park, Splash Island is a popular draw from visitors from far and wide during the summer and the adjacent Stride Place recreation complex features two ice rinks, a fully equipped fitness centre and the indoor Shindleman Aquatic Centre, plus meeting and conference facilities for groups of all sizes. You can find more about each of these island venues at islandontheprairies.ca

The **Manitoba Agricultural Museum** at Austin is dedicated to collecting vintage farm machinery and buildings from 1900 and beyond. Located on 320 acres, this historical site is home to Canada's largest collection of vintage agricultural



*Manitoba
Agricultural
Museum,
Austin*

equipment with more than 500 pieces of machinery housed on site. The Homesteaders' Village provides a snapshot view of life on the prairies for settlers with more than 20 heritage buildings furnished and equipped with period artifacts and displays. This facility also includes an on-site campground, picnic areas and gift shop. This destination offers tours and hands on experiences and events throughout the year. Find out more at mbagmuseum.mb.ca or phone **204-637-2354**.

Acres of old-fashioned fun and adventures await!

You can't even imagine all that is now available at the PTM heritage museum!

Check out all our great events on our website.

www.threshermensmuseum.com

204-325-7497

 @PembinaThreshermensMuseum

T PEMBINA
Threshermen's
MUSEUM

Incorporated in 1968

"PTM ... Prepare to be Amazed!"

Hwy #3 between Winkler & Morden

Open Mid-May to end of September

Weekdays: 10 to 5, Weekends & holidays: 1 to 5

Buses & groups welcome

BIENVENUE!

Discover the joie de vivre and big hearts of Manitoba's rural Francophone and Métis communities.



Festival Cheyenne Summer Fest - Ste. Agathe



Montcalm Heritage Festival - St. Joseph

Salut Voisin/Howdy Neighbour - Notre-Dame-de-Lourdes



bonjour
MANITOBA

bonjourMANITOBA.com

Local Farms, Local Eggs

Buying fresh, local eggs is easy in Manitoba.



Eggs in grocery stores across the province are produced by egg farming families like the Siemens family from Rosenort. Regulated egg farmers meet high standards in food safety and animal care.

Roadside Curiosities

Elm Creek is home to the **World's Largest Fire Hydrant**. Standing 8.9 meters (29.5 feet) tall, this attraction was built by local firefighters and unveiled on Canada Day in 2001. It eclipses a similar monument, touted as the 'world's largest' in Beaumont, Texas by five and a half feet.

Millions of years ago, the lush farmland which drives our regional economic was underwater. The creatures that navigated the channels of the Western Interior seaway were truly monsters of the deep. Even the creatures that we recognize today were of Jurassic proportion during this era. The **Archelon Turtle** in Morden that greets visitors at the west end of the City represents a life-sized likeness of the amphibious reptiles that called this area home during that period. Unveiled in 2017, this creature boasts a reach of four and a half metres wide.



World's Largest Fire Hydrant, Elm Creek



Archelon Turtle, Morden

The Dutch roots of their community are celebrated with the **Holland Windmill** which also serves as the town's visitor information centre. With accompanying tulips and now the addition of a mini golf course on the site, this community destination is growing to become more than a quick photo opportunity along Highway Two. Drop in for a visit.



Holland Windmill

In Roland, visitors are greeted to the community by the **World's Largest Pumpkin**. This eye-catching landmark was erected in 1990 to celebrate the community's centennial and to honor the achievements of local grower Edgar Van Wyck whose 570-pound pumpkin set a world record in 1977. Now, at an annual festival in the community held each fall, pumpkins from across the Province and beyond tip the scales at well over 1,000 pounds for top honors — similar to the actual weight of this monument, which tips the scales at 1,684 pounds.



World's Largest Pumpkin, Roland

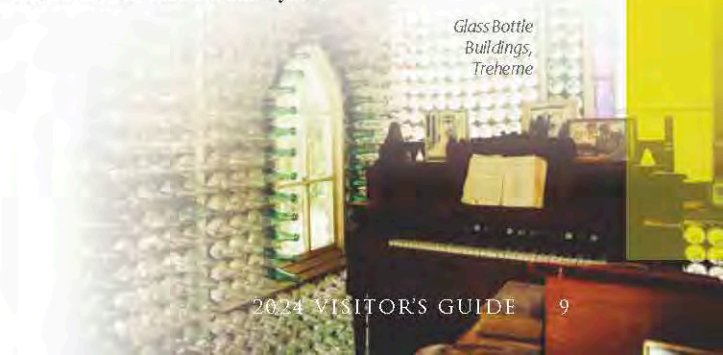
La Riviere was the first Manitoba home of the wild turkey. To celebrate that introduced and continue to promote this game in the area, the nine-foot **Wild Turkey Statue** greets visitors to the valley town. Chances are that your visit to the community will offer more than just a glimpse at this likeness, but chances

are good that you'll also see some of these feathered flocks roaming about the town and surrounding wilderness.



Wild Turkey Statue, La Riviere

The creativity of Bob Cain is on display in downtown Treherne at the **Glass Bottle Buildings**. Started in 1979, the project evolved from a single one-room house made of 4,000 bottles to construct a chapel, a wishing well, and a fully functional outdoor washroom enclosed in a structure entirely comprised of bottles as well. In 2007, the village was relocated from the Cain family farm to its present location where it continues to be a popular attraction for visitors each year.



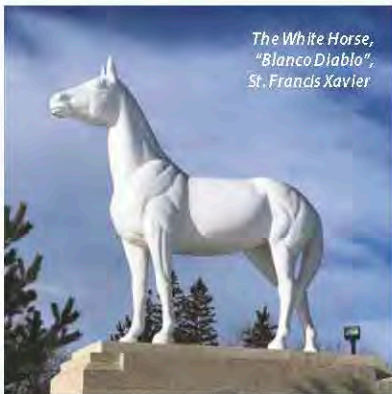
Glass Bottle Buildings, Treherne



North America's Largest Smoking Pipe, St. Claude

North America's Largest Smoking Pipe can be found in St. Claude. The symbol commemorates the early settlers to the region who emigrated from a town in France of the same name where the principal industry is the manufacturing of smoking pipes. This monument stands five feet high, is 19 meters long and weighs just over 400 pounds. The distinctive monument in the R.M. of St. Francis Xavier which has

signaled the western approach to Winnipeg since 1966, **The White Horse, "Blanco Diablo"** serves as a solemn observance of a Cree legend from the 1690's, symbolizing a tragic tale of true love and murder. Plaques on site at this monument tell the



The White Horse, "Blanco Diablo", St. Francis Xavier

tail of the conflict and changing alliances on the western prairies that pre-dates European settlement to the region.



World's Largest Coke Can, Portage la Prairie

A century old water tower has become one of Portage la Prairie's most striking visitor curiosities. Standing 26 meters (85 feet) tall, the **World's Largest Coke Can** was commissioned by the Coca Cola company and remains a popular attraction for travelers discovering the City.

The beauty of the natural flora, creating a small rose-covered 'isle' along the water after a spring rain inspired the name for the place we now call Roseisle in the R.M. of Dufferin. The name became official in 1901 when the town began to take shape with the arrival of the railroad. In 1991, the **Roseisle Pioneer Monument** — a large rose — was conceived and was designed and built by local welder





Roseisle Pioneer Monument

Clifford McPherson and painted by area artist Stephen Jackson. The monument stands as the centerpiece in a beautiful garden at the heart of town.

On your next visit to Altona, be sure visit the **World's Largest Painting on an Easel**. Don't miss this giant likeness of Van Gogh's sunflowers. You're sure to spot it easily, as this popular attraction, celebrating Altona's active art community stands 23.3 meters (76.5 feet) tall.

A tribute to the survivors of the residential school system are celebrated on the grounds of a site that once housed one of these institutions. On the urban reserve lands at Keeshkeemaquah in Portage la Prairie, the Long Plain First Nation has erected a monument standing 25 meters (85 feet tall) with a 3.6 meter (12 foot) **Golden Eagle** perched atop. The symbol looks to the East to signify the beginning of a new day as the sun rises on today's fresh start.



*Golden Eagle,
Keeshkeemaquah,
Portage la Prairie*



*World's Largest Painting
on an Easel, Altona*

Hockey Stick, Winkler



Hockey lovers will be astonished to find a 65-foot 3,000 lb **Hockey Stick** in Winkler welcoming future hockey stars to the city when they visit the Winkler Centennial Arena. The giant hockey stick was built to welcome participants in the 2019 National Women's U18 Championship.

Municipal Highlights

Welcome to **Carman, Manitoba**. Travel close to home and uncover beauty and excitement in your own back yard. Just a skip and a hop from Winnipeg, Carman is a growing town with an enormous spirit and a lot to explore. Make sure to add this charming town to your destination list.

Once you get there, you'll be met with nature's beauty: fresh air and gorgeous views. Start your day off early with one of the best 18-hole golf courses in the region. Tee off at dawn and make your way across the course, then enjoy a refreshing walk (or cycle) down the Carman Community Pathway which links right from the golf course to some of Carman's other exciting recreation areas. Wind up at the baseball diamond or make your way down to King's Park for some sandy beach volleyball, a game of tennis, or a nice picnic at one of the picnic shelters.

Worked up an appetite yet? It's time for some grub! Choose

place for a family vacation. At the shores of the reservoir you'll find fishing, swimming and boating. Come for a family picnic or set up camp.

Roseisle received its name in the early 1890's by settlers Mr. & Mrs. A. Begg. Struck by the beauty of a small rose-covered "isle" rising out of the water after a big rain, The Begg's decided it was an appropriate name for the area in the **Rural Municipality of Dufferin**.

Surrounded by lush farm land and the sweet smell of fresh country air, discover **Altona, Manitoba** a beautiful oasis on the prairies offering a quality of life that's hard to beat. Plan your trip to Altona from the comfort of your home with their online map at www.altona.ca/tourism/map

Enjoy the great outdoors at the Altona Campground, located within walking distance of Altona's many amenities, it's the perfect place to call home during the summer. All sites include 30 amp electrical & water service, and easy access to washroom and shower facilities, and a playground. Book today calling 204-324-9005.

Discover four seasons of fun at Buffalo Creek Nature Park. During the Spring and Summer season at the nature park come out and enjoy the trails, and the beautiful surroundings. Enjoy a day of cycling or walking along an 8-foot wide asphalt trail. The trail reaches Altona from the south via the rail line trail to Gretna and from the west at the Buffalo Creek Nature Park. This trail is part of the longest multi-use trail in the world — The Trans Canada Trail. After a day on the trails, dip your line in the water for catch and release fishing. This is a popular spot for tobogganing in winter as well as pleasure skating on the pond, which is cleared and flooded. The field house makes an ideal warm up spot for changing, restrooms or a cup of hot chocolate. Dive into fun at the Altona Aquatic Centre, located in Centennial Park - the best place to spend a day in the sun! Feel the rush of a plunge down the 133-foot waterslide. Or, stay cool while splashing with the kids among the centre's spray columns, water geysers, water cannons and jumbo spraying sunflower. There is also a Junior Olympic size pool to float your day away in. The Altona Aquatic Centre also offers picnic and sunbathing area, single and family change rooms, bathrooms, showers and lockers, and a poolside



from feel-good food like chicken fingers & fries, pizza & wings, or satiate your sweet tooth with some bakery items! Whether you're in the mood for a grab-and-go snack, would like some casual dining, are interested in a retro drive-in experience, or look forward to a full-service sit-down restaurant, you'll find exactly what you're craving among their variety of restaurant options.

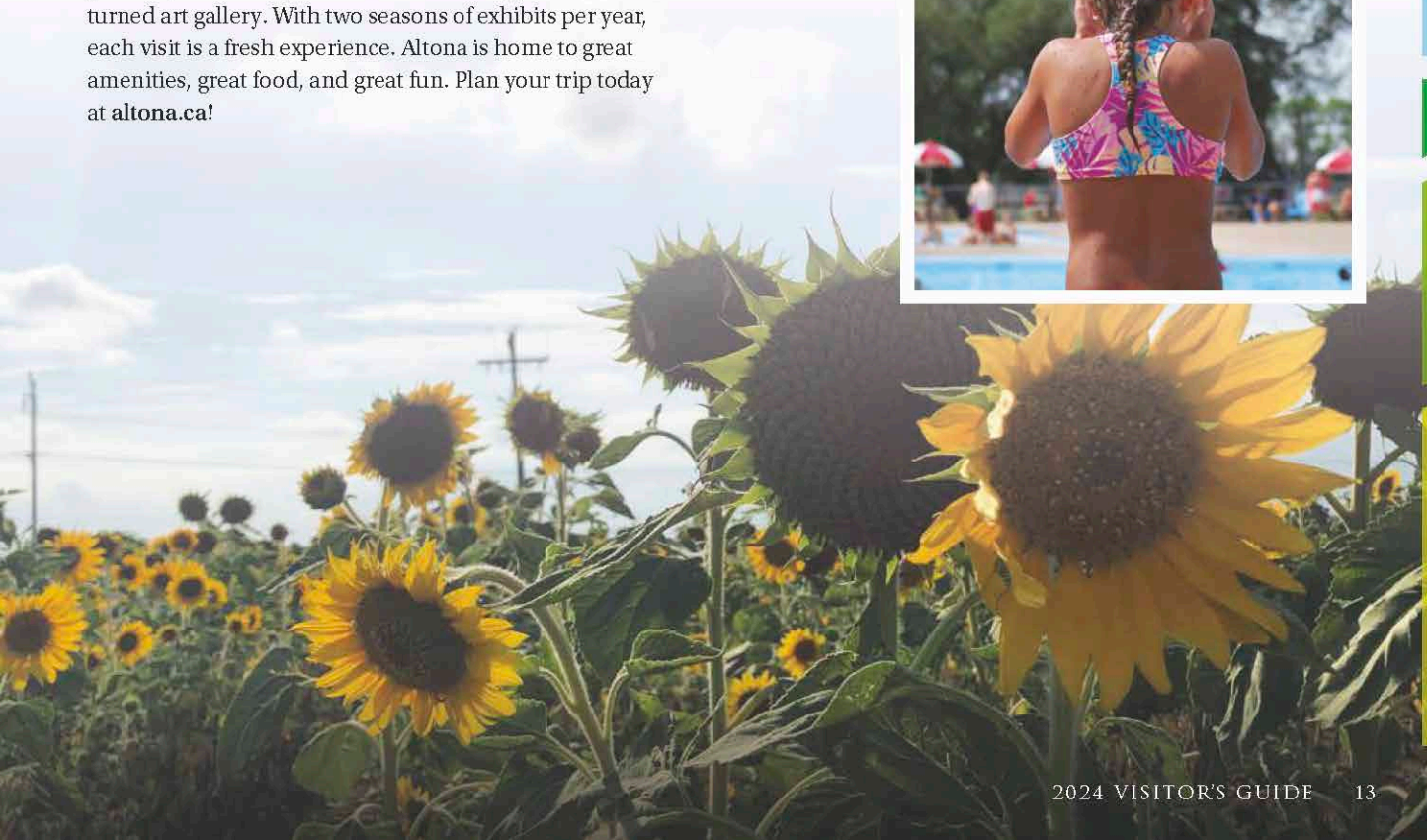
Stephenfield Provincial Park, in the Rural Municipality of Dufferin, is nestled beside the Boyne River and is a pretty

concession stand to fill hungry tummies. The centre offers special family rates, season passes, swimming lessons, group rentals, and special public swim sessions for tots, teens, adults and families.

Altona's signature event, the Manitoba Sunflower Festival is held on the fourth weekend of July and features great food, music, art, and a field of sunflowers for your perfect photos. Other events include a weekly Saturday morning Farmer's Market, an annual Canada Day Celebration, and Winter Carnival.

Appreciate a beautiful sunny day in Altona's many outdoors recreational spaces. Play ball at one of Altona's 14 baseball fields or stake out your spot in the batting cage to perfect that homerun hit. Grab your racquets and a friend to play a round of tennis or badminton. Or spend a few hours touring the town on one of their many walking trails!

Delve into the Arts in Altona - nestled within an expansive sculpture garden with lovingly maintained grounds, the Gallery in the Park is a heritage home turned art gallery. With two seasons of exhibits per year, each visit is a fresh experience. Altona is home to great amenities, great food, and great fun. Plan your trip today at altona.ca!



MUNICIPAL HIGHLIGHTS

Plum Coulee, a community within the **Municipality of Rhineland**, is a thriving community found on Highway 14 just 10 minutes from the City of Winkler and 20 minutes from the Town of Altona. Plum Coulee has a beautiful man-made beach so you can enjoy a hot summer day there. You can take a walk on the pathways through the park where you will find a playground and outdoor exercise equipment. The Saidye Rosner Bronfman Heritage and Recreation Park downtown Plum Coulee is the perfect spot to stop and have a picnic lunch or visit Annajo's Bistro for a delicious lunch or dinner. Plum Fest is always held on the third weekend in August and offers a Waffles and Crackles breakfast, a great parade, free live entertainment on the main stage and fireworks to end off the day. Sunday always starts with a community church service and followed by a hot dog & home fries lunch. The Plum Coulee Elevator Museum is a must see! A grain elevator has been converted into a museum and has many artifacts from early days. It also has an interpretive centre to show how the grain elevators worked. Plum Coulee also has a community hall that holds 200 people, an arena, an outdoor skating rink and the Centre on Main which has a capacity for 75 people and is a very popular place to hold family gatherings etc.

Gretna is a thriving community within the **Municipality of Rhineland**. It has an arena that is currently getting a facelift that will make it a state-of-the-art arena. Gretna hosts the annual Hot Spot Festival on July 13, 2024. It's a fun filled day with something for everyone.

Emerson is a thriving border town in the **Municipality of Emerson-Franklin**. Emerson is the host of great Canada Day celebrations. Watch for updates for this year's events on Facebook. Emerson Golf course is a nine hole golf course that has a nice layout. It has golf carts and a nice clubhouse.

Dominion City is an unincorporated community in the **Municipality of Emerson Franklin**. It is proud of the Kyle Memorial Golf Course – a nine hole 2029 yard par 3 course with a licensed clubhouse and full menu.

Roland is a village of about 300 people in the **Municipality of Roland**. Roland is the birthplace of the Canadian 4 H council and the Canadian 4 H Club. Roland is home to the world's largest pumpkin, a fiberglass structure built as a tribute to

Edgar VanWyck, a local resident, who made the Guinness Book of World Records in 1977 for growing the largest pumpkin.

Letellier, is a small francophone community in the **Rural Municipality of Montcalm**. One mile north of Letellier on Highway 75 you will find the Richardson Pioneer Red River South, a handler and merchandiser of all major Canadian grown grains and oilseeds.

Saint Jean Baptiste is an unincorporated community in the **Rural Municipality of Montcalm**. The community has a distinct French-Canadian culture. St. Jean-Baptiste Day has been celebrated here for almost 125 years. This year it is on June 24, 2024.

St. Joseph, in the **Rural Municipality of Montcalm** is the home of the Musee St. Joseph Museum. It is a vast area with hundreds of artifacts displayed in various buildings.

Visiting Morden, Winkler & the Municipality of Stanley?

There's so much to do and see in the area with all its unexpected places. Visit the Butterfly Garden in Winkler. Discover nature at the Discovery Nature Sanctuary in Winkler. Colert Beach in Morden is a great place to spend a hot summer day. Prefer a pool? Visit the Winkler Aquatic Centre. It is a family friendly public pool which features a twisty waterslide, speed slides, diving boards, climbing wall, hot tubs, zero depth beach entry, spray park, kiddie pool, family change rooms and concession. Morden also offers a Spray Park found at the Morden Park. Morden has several community parks and recreation areas located throughout Morden.

The Canadian Fossil Discovery Centre houses the largest collection of marine vertebrates in Canada. Winkler holds its annual Harvest Festival on the 2nd weekend in August and the Morden Corn & Apple Festival is held annually on the last full weekend in August.

Morden & Winkler offer over 50 restaurants to choose from. Whether you're in the mood for an authentic traditional meal or good old-fashioned home cooking you'll find what you're looking for!

If you're looking for a beautiful golf course, you'll find it here. The Minnewasta Golf and Country Club located on the edge

of the beautiful Pembina escarpment features hilly terrain with various types of trees bordering the fairways. The Winkler Centennial Golf Club has 18 beautiful holes, a full practice facility and a fantastic restaurant. VB's Entertainment Center and King Pinz Pub & Grill. Winkler's only entertainment center for all ages. From Bowling, Mini Golf, Arcades, to so much more! Stop by 1765 Diamond Drive for a day packed of adventure. In Morden, be sure to stop by at Sharptooth Adventures, a Children's Amusement center. Sharptooth Adventures is a Dinosaur themed indoor play center located at 316 Loren Drive.

The **Morden Corn & Apple Festival** is held every year on the last full weekend of August. This year it will be held on August 23 -25. It a fun filled weekend with something for everyone. The midway is a big attraction as is the parade on Saturday morning of the Festival. The Morden Corn & Apple Festival is one of the top 3 events in Manitoba. If you hear the antique steam engine whistle blow, it means there's a fresh batch of corn ready to be handed out for free! There's always top notch entertainment and the Old Time Dance. Don't miss the fun of the Morden Corn & Apple Festival

Manitou, situated in the **Rural Municipality of Pembina** is more than just a small town. As a caring community where nearly everyone knows one another, it offers a secure friendly environment to visitors.

Built in 1930 the Manitou Opera House is a local heritage landmark known for its unique acoustics. Regular events are held there all year round.

Manitou is very proud of the Nellie McClung Museum. Two historic houses associated with Nellie McClung were renovated and relocated to the town in 2017 and reopened as museums.

The Manitou and Community Pool offers a great place to go to cool off on the hot summer days. They also offer swimming lessons and a swim program.

The Manitou Honey, Garlic and Maple Syrup Festival takes place on the first Saturday following Labour Day. Visitors can get a "Taste of the Pembina Valley" here. Activities such as Pancake Breakfast, Craft Show and Sale, Farmer's Market, Free Stage Entertainment, Historic Town Tours, Beverage Gardens and topped off with a delicious Buffet supper.

Darlingford, located 21 km west of Morden in the Rural

Municipality of Pembina. In 1921, Darlingford and the surrounding district commemorated their military efforts and their war dead by constructing a Gothic-inspired memorial building and park. Maintained today by volunteers it remains the only free-standing memorial building in



Manitoba with the sole function of commemorating the war dead.

Also in the **Rural Municipality of Pembina** is the Hy-Wire Zipline Adventures, located on 160 acres in the Pembina Valley. They offer a 5-cable tour and an 8-cable tour with Manitoba's highest and longest ziplines.

La Riviere is located in the **Rural Municipality of Pembina**. It has a post office, credit union, a 5-lift ski hill, a construction company and a seasonal drive-in restaurant. At the hub of the community, La Riviere & Community Recreation Centre services many purposes and many events. Tom the Turkey, a local statue, is a real attraction for tourists. Oak Valley Productions stage their annual Passion Play at it's picturesque outdoor theatre the middle two weeks in July. Visit their website at www.passionplay.ca. Each spring La Riviere hosts an annual event called the Raptor Festival celebrating the migration of hawks and eagles. This event attracts hundreds of nature enthusiasts to this area to catch a glimpse of these birds in their natural habitat. You may spot a Bald Eagle, Swainson's Hawk or Red-tailed Hawk to name a few.

Pilot Mound is an unincorporated community within the **Rural Municipality of Louise**. The Manitoba World War 1

MUNICIPAL HIGHLIGHTS

Museum is a non-profit museum dedicated to the memory of Manitobans in the Great War 1914-1918. It contains an extensive library and archives, medals, uniforms, equipment and panoramic photographs.

Marringhurst Heritage House located 14 kms west of Pilot Mound on Highway 253 and 1.5 kms north is a house, fully restored to its original grandeur and operates as a turn of the century farm home museum. It has newly completed kitchen facilities and provides an elegant venue for weddings etc.

Crystal City is also located in the **Rural Municipality of Louise**. Crystal City is the home of the Community Printing Museum and the Star Mound School Museum.

Clearwater is an unincorporated community recognized as a Local Urban District in the **Rural Municipality of Louise**. It plays host to the Harvest Moon Festival, a music and organic farming event held each September. Clearwater is also the site of an annual July 1 Canada Day Baseball tournament.

The **Town of Morris** is located on Highway #75 in the heart of the Red River Valley. Home of the Manitoba Stampede. The Manitoba Stampede and Exhibition is Manitoba's only Pro-Rodeo and will be held July 19-21, 2024. It is considered a Star attraction by the Manitoba Government of Tourism and Heritage. For 4 days, thousands of spectators and participants from across North America come to watch the competition. One of the largest dairy shows in the province, light and heavy horse shows, school-work and hand craft competitions, free family entertainment, indoor cabaret on Friday and Saturday nights and community church service. The town has a very long history involving floods and fur trade companies. Morris is one of 18 communities in the Red River Valley surrounded by a ring dike. The economy of Morris is based on agriculture.

Lowe Farm is a farming community in the **Rural Municipality of Morris**. Lowe Farm has three churches, a credit union, a recreation centre, a privately owned grocery store, farm supply, gas station, a café, an elementary/high school and a community park. Lowe Farm has three baseball diamonds, two in the park and one on the school playground where a baseball program is run.

Come to **Rosenort** and become a part of a growing community just 30 minutes south of Winnipeg. Rosenort is in the **Rural Municipality of Morris**. The Rosenort Summer Festival runs annually at the end of August and includes fun for the whole family. A 4.2km Rosenort River Trail is great for biking, hiking and running. Dogs are welcome but must be on a leash.

Ste Agathe is primarily a francophone community in the **Rural Municipality of Ritchot**. The Ste Agathe Dam and Reservoir is a popular spot for fishing and boating.

Brunkild is located in the **Rural Municipality of Macdonald**. The historic site is the Black Family Monument that was erected in commemoration of the Black family and their dedication to the Brunkild community.

Sanford lies approximately 12 kilometres southwest of Winnipeg. It is situated in the **Rural Municipality of Macdonald**. Sanford is home to Meadowbrook, a small retirement community, a United church and a recreation centre.

LaSalle is the largest urban centre in the **RM of Macdonald**. With a population of 1400 the community members are active in establishing facilities. Home to La Barriere Park is a beautiful park to walk in, especially in the fall. Great canoeing on the La Salle River to the Red River. Also has great cross-country trails in the winter.

Oak Bluff is a predominantly agricultural/agri-based business community in the **RM of Macdonald**. A recreation centre with artificial ice and a hall for community events are available to rent for weddings, socials and other fundraising events. The recreation centre added a 4-plex of baseball diamonds and a soccer pitch to the school property. The Oak Bluff Community School is also a hub for community activity. In the past several years the population of Oak Bluff has increased significantly due to the development of Oak West.

Because of its proximity to Winnipeg, the **RM of Headingly** boasts big city amenities and services yet provides residents with a slower paced, intimate community life. The

community has many successful businesses. The Breezy Bend Country Club and John Blumberg Golf Course are prominent employers and very popular for their beautiful golf courses.

St. Francois Xavier is located in the Rural Municipality of **St. Francois Xavier** and is about 15 km west of Winnipeg on the Assiniboine River. It is the second oldest settlement in Manitoba. The community is very proud of their volunteer run community centre.

Elie is an unincorporated community in the Rural Municipality of **Cartier**. The primary industry in Elie is agriculture. During the evening of June 22, 2007 a powerful F5 tornado struck the town of Elie. The tornado was unusual because it caused extreme damage during its roping out stage at a mere 35 yards in width and moved extremely slowly and unpredictably. Because Environment Canada adopted the Enhanced Fujita Scale in 2013, there will be no more tornadoes with an F5 rating, making this tornado the first and last confirmed F5 tornado in Canada. No one was injured or killed by the tornado.

Oakville, a friendly farming community in the Rural Municipality of **Portage la Prairie** is 56 km west of Winnipeg at the intersection of PTH 13 and PR 331. The Oakville Community Club is the home of many events in Oakville. The club raises money through a variety of fundraiser and grants. Creekside Camping and RV Park has fully serviced sites, heated pool, modern washrooms and playground. The Christmas Market is held annually near the end of November at the Oakville Community Hall. An Annual town Wide

Garage Sale is held annually as well.

High Bluff in the Rural Municipality of **Portage La Prairie** is notable for being the home of FOUR of Manitoba Premiers. **St. Ambrose Beach Provincial Park** is dotted with campgrounds and picnic areas. It is a great place to view the migratory birds of Manitoba.

Newton is a village nearby to the Hamlet of Elm River Hutterite Colony and Oakville, in the Rural Municipality of **Portage la Prairie**.

Poplar Point, in the Rural Municipality of **Portage la Prairie** is the home of the Poplar Point and District Memorial Rink, built as a World War II memorial. The high-arched recreational facility features an impressive superstructure of laminated wooden arches bound to a skin of aluminum-covered wooden boards. The building is an elegant expression of strength and grace that creates an open, airy space used primarily for hockey, skating and indoor summer events.

Dakota Plains First Nation is a Wahpeton band southwest of Portage la Prairie. It borders the somewhat larger **Long Plain First Nation** as well as the Rural Municipality of **Portage la Prairie** and the Municipality of **Norfolk Treherne**.

Dakota Tipi First Nation is situated approximately 2.5 miles southwest of the City of Portage la Prairie, on the Yellow Quill Trail and can be reached by a paved Class C highway.

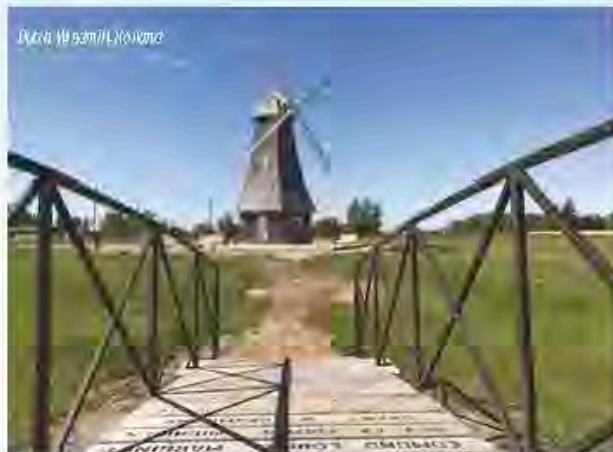
Delta Beach is a community of approximately 200 homes located on the southern shore of Lake Manitoba in the Rural Municipality of **Portage la Prairie**. The Delta Beach Campground is in the process of being redeveloped after it was devastated by the 2011 flood event. Plans and efforts are moving ahead for a July long weekend opening.

Macdonald is an unincorporated community northwest of Portage la Prairie, Manitoba. The community is in the Rural Municipality of **Portage la Prairie**. The community is mostly agriculture, with a small residential area. PTH 16 is the main roadway connecting Macdonald with Portage la Prairie.

Portage La Prairie is a small city in the Central Plains Region of Manitoba. Portage La Prairie is a major agricultural centre



World's Largest Coca-Cola Can
Portage La Prairie



in Manitoba and in Canada. The rural land surrounding the community is undoubtedly a bread basket in North America, boasting some of the best soils on the continent for the production of vegetables, berries, grains and lentils. Fort La Reine is a heritage museum and Manitoba Star attraction located on the east side of Portage. Today the museum is home to an array of buildings from Portage and the surrounding region and covers cultural and natural prairie history. Portage La Prairie celebrates a number of annual events and festivals which include the Portage Exhibition and Fair held every July, the Portage Potato Festival which takes place in mid August, Whoop and Holler Folk Festival in late August and the Manitoba Air Show at Southport in June. In central Portage la Prairie, residents and tourists can enjoy the amenities and beauty of the renowned Island Park. Together, Crescent Lake and Island Park form one of Manitoba's most recently designated Star Attractions. Nearby recreational opportunities include an 18-hole golf course, the Portage Fairgrounds, an outdoor water park and Stride Place - home of the Portage Terriers hockey club and indoor wave pool. The Community Walkway is one of Portage La Prairie's most popular attractions. It parallels Crescent Lake's waterfront, is a 5.2 km multi-use trail used for walking, bicycling, skate boarding and roller blading, running past many grand heritage homes and the tranquil sites along the lake. The World's largest Coca-Cola Can has also put Portage on the map. And can be seen from the Trans Canada Highway by-pass. Stride Place features two National Hockey League regulation size indoor arenas, one with seating for 1,680, an indoor water park and conference event facilities.

The community of Southport located about 5km's south of Portage is home to the Southport Recplex featuring a fitness centre with a rock-climbing wall, gymnasium and a 5-pin bowling alley, aside from the proudly displayed military/air force history throughout the town and airport. The 13th Field Battery of the 26th Field Artillery Regiment Royal Canadian Artillery is based out of Portage la Prairie.

MacGregor is a farming community in the Rural Municipality of Norfolk. MacGregor Fair includes a pancake breakfast, light horse show, baseball tournament, MGRA, trade show, kids' activities and much more! It is held usually the last weekend in June. Visit their website for more information. www.macgregorfair.com. Fall Fun Day is a full day of activities that takes place in September. The first weekend in December is the Santa Claus Parade and the Holiday Home Tours. Visit their website for more information. www.macgregorfair.com.

Austin in the Rural Municipality of North Norfolk is home to the Manitoba Agricultural Museum. This year the Manitoba Thresherman's Reunion and Stampede will be held on July 25-28, 2024. The Manitoba Thresherman's Reunion and Stampede is an outstanding celebration of Manitoba's agricultural roots and pioneering spirit. It's about history, it's about community, it's about family. And it's about fun! Visit their website at info@mbagmuseum.ca for more info.

The Rural Municipality of Victoria offers a variety of activities for everyone. From shopping on the main streets in Holland and Cypress River, to incredible trails for hiking, quadding and snowmobiling — we have it all! Don't miss the Prairie Wind Music Festival held annually the first weekend of June in Cypress River where people from all over come to enjoy the music, artisan vendors, and food trucks a plenty. While Holland hosts events from a Family Fun Canada Day celebration to the Santa Claus Parade the first weekend in December. It doesn't matter the season, we have plenty to do and look forward to seeing you soon! www.rmofvictoria.com

Cypress River situated in the Municipality of Victoria is a great place to live, work and raise a family. The Victoria Millenium Trail leaves the Spruce Woods Provincial Park along the South Park Road, heading south along Hwy #2

towards the village of Cypress River.

Holland, also in the **Municipality of Victoria** is known for its beautiful natural scenery. The residents of Holland, affectionally known as “Hollanders”, contribute to the warm and welcoming atmosphere of the community. The town is equipped with an elementary school, library and fire department. During the winter months residents and visitors alike can enjoy a skating arena and curling rink. A stone’s throw away, the Trappist monastery, Our Lady of the Prairies, once produced the famous fromage de la trappe. This historical tidbit adds a unique flavour to the rich history of Holland. Just a short drive north of the community, visitors can explore the beautiful Spruce Woods Provincial Park. Holland pays tribute to its Dutch roots with a windmill and random tulips. Located just south of Hwy #2, the 42-foot windmill is illuminated each evening. A plaque has been installed by the windmill that tells how the town got its name.

Treherne, in the **Municipality of Norfolk Treherne** is halfway between Winnipeg and Brandon on Hwy #2. Treherne hosts the annual “Run for the Hills”, with the course winding through the Tiger Hills. A popular tourist attraction consists of a glass bottle house, chapel, wishing well and outhouse. Treherne also has a museum, which exhibits an extensive antique gun collection and mini-indoor village. The Second Chance Car Museum was established in Treherne in 2019. This museum is 25,000 square feet and is capable of holding

100 cars and is currently at capacity. The cars currently being stored range from years 1918 to 2018. This hidden gem is every car-enthusiast’s dream. The Boyne Valley Nature Trail consists of a 2.5 km pathway in the town of Treherne and a 1.5 km nature trail in the Boyne Valley on the east side off Treherne between Hwy #2 and the CPR line. The 122nd Treherne Agricultural annual Fair will be held on June 29 & 30, 2024. Situated near the Cottonwood Campground, the Treherne Aquatic Centre is a junior Olympic pool with zero depth beach entry. Features include tot slide, integrated wading pool, lazy river and bubble bench, diving board and waterslide. The Treherne Delahunt Golf and Country Club offers a first-class golf experience in a scenic country setting. It is a 9-hole course that plays as 18 holes with alternate tee areas on each hole.

Rathwell, a part of the agricultural area of south-central Manitoba is situated in the **Municipality of Norfolk Treherne**.

St. Claude is a lovely Franco-Manitoban town in the **RM of Grey**. Its first inhabitants came from the Jura region of France in 1892. A pipe shaped monument surrounded by flowers (the second largest pipe in the world) is a salute to these native settlers and their native town of Saint-Claude renowned for its pipe manufacturing. The focus of the Dairy Museum, however, is the local dairy industry and its importance to the region. Artifacts on display include a variety of presses, cream cans, butter churns and other items showing how the industry evolved during the 20th century.





The Pioneers and Chalmerses Museum, Notre Dame de Lourdes

Other buildings in the museum complex include a former railway station, a chapel, a barn and an old schoolhouse. Another heritage building of interest in St. Claude is a regional jail dating back to 1912.

The town hosts an annual winter carnival in February. For summer recreation they have a softball field, and parks with playgrounds. The nearby campground, Camping des Baies, on the shores of Lac Boissonneault offers swimming and watersports. But tourists are drawn mainly to the museums.

Notre Dame de Lourdes is a community in the **Rural Municipality of Lorne**. Established in 1891, the community was inspired by French and Swiss origins giving Notre Dame de Lourdes its decidedly European flavour. Notre Dame de Lourdes offers plenty of events all year long. Springtime brings the annual Ice Fishing Fun Day, the Family Curling Bonspiel, The Family Hockey tournament and the fishing derby. Summer events organized by the Notre Dame Wildlife Association are the .22 shoot, the muzzle shoot as well as the Howdy Neighbour weekend celebration. In fall they have the Turkey Shoot and the Notre Dame Craft Sale. Winter brings the Ice Skating Show, Snowmobile Derby, and the Annual Sportsmen Night.

Swan Lake is a Local Government District within the **Rural Municipality of Lorne**. Swan Lake is located on PTH 3 just east of the Junction of PTH 34 on the edge of the beautiful Pembina Valley. This little prairie town has everything you would need for retirement, to start a business or for a weekend visit at our lovely campground.

Altamont is an unincorporated community in the **Rural**

Municipality of Lorne. A monument in Altamont, on the CNR Miami subdivision commemorates local grain elevators and the men that operated them.

The Village of Bruxelles, nestled in the picturesque Cypress Hills, offers that “small town” environment that todays harried individuals seek. Located in the **Rural Municipality of Lorne** just 5km off the #34 Highway on PTH #245 and is the second highest point in Manitoba. The Main agricultural activities are dairy farming and oil seed farming. The community boasts of an enclosed skating rink, large sports field for soccer and baseball, children’s playground, ski trails and a developing park area from the recently reclaimed convent grounds.

Saint Alphonse is a small English speaking Belgian community in the **Municipality of Lorne**. The Saint Alphonse Schools Monument was dedicated on July 2, 2000 in commemoration of the students, parents, sisters, priests and lay teachers of the Saint Alphonse schools.

Somerset is perched atop the Pembina Mountain with an unparalleled view of the St. Leon wind farm and the beautiful patchwork of surrounding fertile fields and is in the **Municipality of Lorne**. Come and enjoy the beautiful landscape and visit the Gabrielle Roy Museum which houses a collection of objects that once belonged to the Roy family. **Mariapolis**, aka the Gateway to Nature is in the **Municipality of Lorne**.

St. Leon, best known as the site of the St. Leon Wind Farm project is in the **Municipality of Lorne**.

Miami, in the **Municipality of Thompson** is a very lively community with very willing volunteers. Miami Railway Station Museum, built in 1889, is a national historic site depicting the life and times of a railway station agent. Hours of operation are Wednesday through Sunday 8:30 a.m. to 12p.m., 12:30 p.m. to 5:00 p.m. until the end of August. Miami Museum has sustained more than 42 years of continued contributions to local heritage. Contact miamimuseum@gmail.com

MUNICIPALITY OF PEMBINA

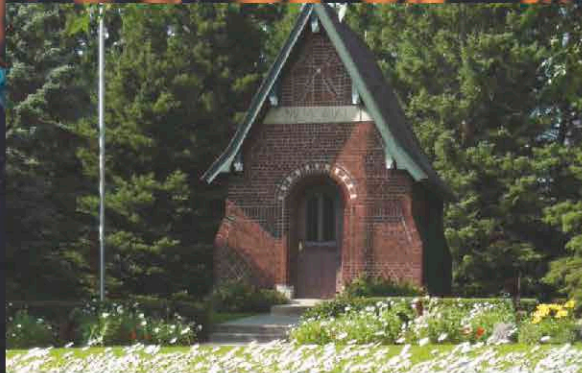
Darlingford Manitou La Riviere



Holiday Mountain La
Riviere



Manitou Community
Pool



Darlingford Memorial
Park



Manitou Town Golf
Course

Heart of the Pembina Valley!

www.pembina.ca



*Thinking About Starting a Business?
Already in Business? Need a Loan? Need Assistance?*

We can help you reach success by providing business loans, training, expertise, and support with business plans, start-ups, expansions, and succession planning.

OUR STAFF ARE HERE TO SUPPORT YOU!

Community Futures
Heartland

1-877-472-7122
204-239-0135

Community Futures
White Horse Plains

1-888-947-2332
204-353-4200



Growing communities one idea at a time.




Community
Futures
Heartland



@cfheartland

www.cfwhp.ca www.cfheartland.ca

HOME OF CANADIAN FOSSIL DISCOVERY CENTRE
AND THE MANITOBA BASEBALL HALL OF FAME



ACCESS
EVENT CENTRE

EVENTS TO REMEMBER HAPPEN HERE!

SPORTS CATERING CONFERENCES WEDDINGS

FOOD CONCESSIONS

111-D GILMOUR ST, MORDEN, MB R6M 1N9 | 204-822-5431
WWW.MYMORDEN.CA/ACCESS-EVENT-CENTRE



BORDERLAND
POWERSPORTS

204-822-5550
167 Loren Drive, Morden, MB (right off the trail)



600 Centennial St.
Winkler
204-325-8387

2510-B Park Ave.
Brandon
204-727-7717

165 Parkroad W,
Steinbach
204-326-8387

5-1400 Sargent Ave.
Winnipeg
204-783-0707

475 Saskatchewan Ave E.
Portage La Prairie
204-239-1411

janzenpaint.com

Your Paint and Hobby Store! Great Selection of Games, Puzzles, Lego and More!



Making a Splash

When the temperatures climb in the summer, few opportunities provide greater refreshment than finding your way to the nearest body of water. The central region is home to a number of great natural and man-made lakes as well as some of the most dynamic and well-designed aquatic venues. When you're coming to visit, be sure to bring your bathing suit.

*Splash Island,
Portage la Prairie*

In Altona, the **Aquatic Centre** is the best place to spend a day in the sun. Feel the rush of a plunge down the 133-foot waterslide or stay cool while splashing with the kids among the centre's spray columns and water cannons, geysers and jumbo spraying sunflower. To check schedules and get more information visit altona.ca or call 204-324-9005.

Visitor's to Morden are pleasantly surprised to discover the attraction that awaits at **Colert Beach** in the Lake Minnewasta recreation area. This three-kilometre lake was created by damming Dead Horse Creek, creating a beach oasis that offers a great venue for swimming, fishing, boating and more. With an illuminated boardwalk and access to washroom, shower and camping facilities on site, this destination offers



a scenic hiking and cycling trail that connects the beach to the heart of downtown Morden. Visit www.mordenmb.ca to learn more or call 204-822-4991.

MAKING A SPLASH

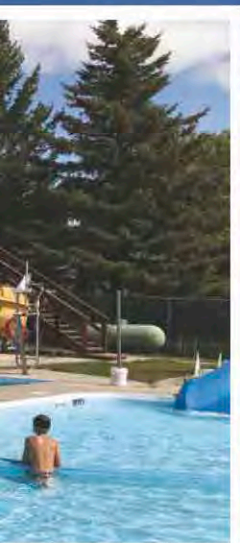
The shallow southern shoreline of Lake Manitoba contributes to create one of the region's most iconic beach vistas at **Delta Beach**. This natural setting which is a popular spot for fishing and sailing sits close to the nearby Delta Marsh, a popular spot for bird watchers and outdoor enthusiasts. Adjacent to a recently re-developed campground and recreation area, this year may be the year to re-discover the Delta. Learn more at www.deltabeachcampground.ca or call 204-857-7772.

Situated near the Cottonwood campground, the **Treherne Aquatic Centre** is a junior Olympic pool with zero-depth beach entry. Features include tot slide, integrated wading pool, lazy river and bubble bench, diving board and waterslide. With a grassed lounge area with picnic tables and shade structure, the pool is also available for bookings for splash parties. Find more at www.treherne.ca.

Delta Beach,
Lake Manitoba



Sunset Beach,
Plum Coulee



With the iconic Prairie View Elevator Museum providing a familiar prairie backdrop, the sandy shores of **Sunset Beach** in Plum Coulee provide an unexpected oasis at the heart of the surrounding agricultural lands. This popular destinations for families may be one of the region's best kept secrets ... until now.

Carman's **King's Park** is home to two popular water features. In addition to the popular heated pool with waterslide which is an established summertime favorite, they've now also added the **Kin Splash Zone** for younger children featuring interactive water table and other exciting features.

Portage la Prairie is home to a unique combination of amenities allowing for year-round play in the water. Best known for **Splash Island**, it's outdoor waterpark that is open from June to September each year, right next door the indoor **Shindleman Aquatic Centre** allows visitors to enjoy the pool no matter the season or the weather. Both offer barrier-free beach entry, water slides, lazy river and additional water features to delight swimmers of all ages. See more at www.strideplace.ca or call 204-857-7772.



MAKING A SPLASH

The **Winkler Aquatic Centre** is a family-friendly public pool set in the heart of the city featuring a twisty waterslide, speed slides, diving boards, climbing wall, hot tubs, zero-depth beach entry, spray park, kiddie pool, family change rooms, drink machines and canteen. With the Campground, Park, Arts & Culture Gallery, and Grandeur's beautiful flower garden all within walking distance this place is sure to keep you coming back.



Winkler Aquatic Centre, Winkler

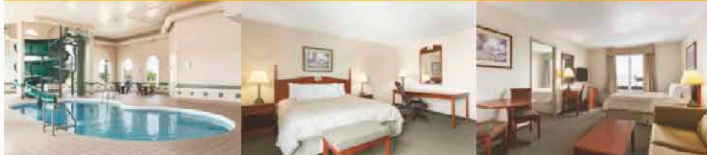


Explore Manitoba with Days Inn!

- Free Breakfast
- Indoor Pool & Waterslide
- Guest Laundry Facilities
- Fitness Centre
- EV Charging



395 Boundary Trail | Winkler, MB | 204.325.8888 | daysinn.ca



10 - 880 15th St
Winkler, MB
204 331 7071



*The sky's
the limit in*



MUNICIPALITY OF

LOUISE

CLEARWATER CRYSTAL CITY PILOT MOUND



Clearwater Skyway



Goudney Reservoir



Pilot Mound Golf Course



Crystal Creek Skating Trail



Annual Demolition Derby

Visit us at **louisemb.com**

Proud of our history on the prairies. The old and the new.

Winkler Harvest Festival



See You at the Fair

You're in for a celebration of French-Canadian culture and its *Joie de vivre* when you attend the **Montcalm Heritage Festival** held in St. Joseph on the grounds of their museum. Learn from historical interpreters, visit the workshops of the blacksmith and leathersmith and visit century old homes that tell the tale of a different era of our prairie past. Please don't leave before having supper, you will not be disappointed. Visit museestjoseph.ca/festival for the full schedule.

The 12th annual **Turkeyfest & Duck Race** takes place in La Riviere during the third week of June. The event is designed to promote good outdoor fun and activities for the whole family and serves as a major fundraiser for local recreation services and programs. With old-fashioned picnic races and games, bike decorating contests, mural painting and the crowd-pleasing rubber duck race down the Pembina river. More information is available at www.pembina.ca

Experience a traditional small country fair and celebrate the achievements of youth in agriculture through participation in the local 4-H club at the annual **Manitou Agricultural Fair**. Take part in a cattle show & sale, gymkhana, handi-craft and photo competitions, plus sport and activities for all ages. For more information contact manitouagsociety@hotmail.ca



The Annual **Portage Ex** is an exciting blend of all your favourite fair components; midway attractions, livestock & domestic competitions, live music & so much more! Come stay with us in our beautiful, fully-serviced campground on **The Island on the Prairies**. Located in a convenient walking distance to Portage Golf Club, Stride Place, Splash Island & Island Park. Learn more on our website at www.portageex.com



Altona's signature event is the **Sunflower Festival**, celebrating the sunflower which has been grown by area farmers for more than 75 years and boasting a venue for "All Out Fun". Held held on the fourth weekend of July, the event includes a downtown festival and kick off party, baseball tournaments, queen pageant, a huge Saturday night stage show and more. A Saturday morning free pancake breakfast and free watermelon

SEE YOU AT THE FAIR

and rollkuchen on Sunday afternoon are just some of the highlights of this popular festival. Watch for strategic plantings of the sunflower as you arrive in the sunflower capital of Canada. Stay on top of the announcements for this year at www.manitobasunflowerfestival.ca

Winkler's **Harvest Festival** is held during the second weekend of August and includes live performances by great entertainers complimenting an amazing midway. For a complete schedule and to learn more about the event, visit www.winklerharvestfestival.com



SEE YOU AT THE FAIR



*Portage Potato Festival,
Portage la Prairie*



Manitou Honey, Garlic & Maple Syrup Festival

Held each year on the 3rd weekend in August, the **Plum Fest** began in 2002 following **Plum Coulee Centennial** celebrations in 2001. Our **free** event is totally family oriented. Come see what 2023 has to offer. Visit www.plumfest.com

A taste of the Pembina Valley is promised when you visit the **Manitou Honey, Garlic & Maple Syrup Festival** in September. Be sure to come hungry because the event includes a pancake breakfast, gourmet alley, barbecue lunches, food sampling and a buffet dinner in addition to a slate of entertainment and attractions. The town also rolls out the red carpet with guided tours of local historic sites and more. All the information is available at www.pembina.ca



Held annually **The Roland Pumpkin Fair** falls on the first Saturday of October. Highlighting the regions agricultural strengths, the Great Pumpkin & Vegetable Commonwealth Weigh-Off showcases stunningly large local produce; the 2019 champion was a pumpkin weighing in at 1,660.5lbs! The days activities start with a pancake breakfast and craft show, with fun family activities through out the day. Take a break to enjoy some specialty pumpkin desserts in the Pumpkin Patch Tea Room before heading off to see the classic car display, face painting and free entertainment on the main stage. End day your of pumpkin fun with the full course Harvest Supper and leave Roland full of good food and pumpkin filled memories. Visit us at www.rmofroland.com

OPEN YEAR ROUND

April-June, Sept-Oct: Mon to Fri 9:00am - 4:30pm

July & Aug: Mon to Sat 9:00am - 4:30pm



MONTCALM HERITAGE FESTIVAL

June 8 - 9, 2024

A celebration of culture & tradition!

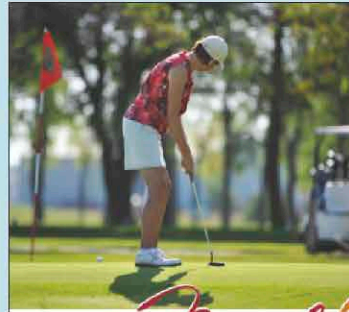
- Heritage & Agricultural Villages
- Parent Tourism Centre • St-Joseph Campground



Discover, experience & have fun!

204-737-2244

www.museestjoseph.ca

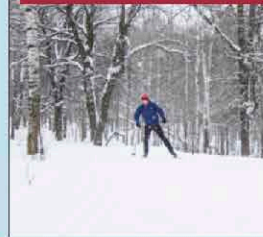


Morden Winkler

IN THE SCENIC RM OF STANLEY

EXPLORE WHAT WE'RE FAMOUS FOR
- from summer to winter -

EXPLOREMORDENWINKLER.COM



289 Main Ave, Plum Coulee, MB

Organic Grains, Flours, Lentils & more, along with all your grocery needs.

Food for the Prairies

Monday - Friday 9am - 7pm

Saturday - 9am - 6pm

Welcome to the **Super 8** by Wyndham in Portage la Prairie!



Make your stay super with our friendly 24-hour service, free high speed internet access, indoor pool, hot tub and 2-story water slide. Relax in your spacious room, enjoy our complimentary Superstart breakfast, and explore the local shops and restaurants.

Plan your next trip with us! Book now at (204) 857-8883.



Super 8 Portage la Prairie

2668 Saskatchewan Ave. W., Portage la Prairie,
Manitoba, R1N 3B2, Canada
(204) 857-8883 | Super8.com

PORTAGE LA PRAIRIE FARMER'S MARKET

Portage la Prairie has a year-round Farmer's Market!

- Seasonal Veggies • Seasonal Fruit • Baking •
- Lemonade • Woodworking • Bath Bombs •
- Soap • Crafts • And so much more!

Summer & Winter Hours: Saturday 10:00 - 2:00

Find us on Facebook @PortageFarmersMarket or
contact Jodie 204-745-7073 for
more information

LOCATED IN PORTAGE LA PRAIRIE, MB.



Join us for our **CIDER** Release Party

May 31 - June 2

*Join us for a day of food
and tasting as we release all
of the 2023 vintage ciders*

f  *woodengatecider*
 431-515-0036

18106 Road 64 west,
Pilot Mound MB R0G 1P0



History Comes Alive



Manitoba WW1 Museum, Pilot Mound

Canada's contribution to the war effort during the Great War of 1914 to 1918 is the sole focus of the [Manitoba WW1 Museum](#) near Pilot Mound. The collection includes photographs, military uniforms, medals and equipment that outline the roles and conditions that our soldiers experienced in battle. The museum also includes one of the most comprehensive archives of Canadian military personnel during that era. For an immersive experience, this site also features a partial trench for visitors to experience what life was like during the era of trench warfare. To schedule your visit, go to [louisemb.com](#).

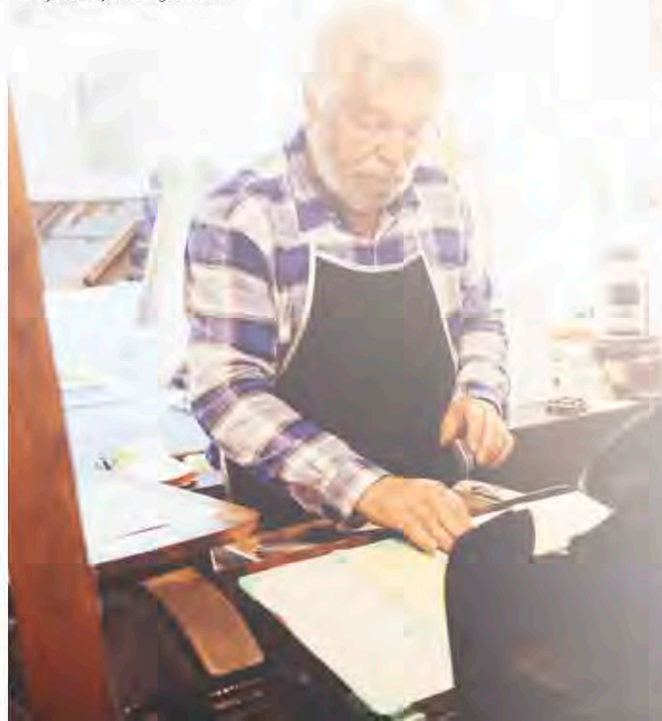


Neubergthal, Altona

Recognized as one of the best-preserved single street Mennonite villages in North America, the **Neubergthal** is a National Historic Site of Canada. Though very much an active community where families live and work today, the self-guided walking tour provides a unique perspective of the settlement that first took shape here in the 1870's. Seasonally, tours are available of select properties to illustrate the lives of families who lived in these housebarn properties. Find more information at neubergthalheritagefoundation.com

Housed in a building that has stood since 1881, **The Crystal City Printing Museum** showcases a remarkable collection of original printing machines — all in working order. The building was originally the printing shop and office for the community's local newspaper, the 'Rock Lake Herald', established in 1881 by Thomas Greenway — later Manitoba's seventh premier. This living history destination allows visitors to step back through time to an era long before the convenience of desktop publishing. See the presses in action, learn about the painstaking processes, and even take home a memento of your visit. To arrange your tour, call **204-873-2591** or visit louisemb.com

Crystal City Printing Museum



Prairie View Elevator Museum, Plum Coulee

In Plum Coulee, a vacant grain elevator was transformed to turn a fading prairie icon into a vibrant destination promoting culture and preserving the community's past. The **Prairie View Elevator Museum** has been developed to illustrate all aspects of pioneer life on the prairies — on the homestead, in the one room schoolhouse, and more. Have you ever been curious about the functional operation of a grain elevator? They have retained some fixtures and exhibits that share a snapshot of that as well. Find us on Facebook [@PrairieViewElevator](https://www.facebook.com/PrairieViewElevator).

The **Musée St. Joseph Museum** was established to preserve the history and culture of the Rural Municipality of Montcalm for the enjoyment of the residents and visitors to the area. This bilingual museum offers an immersive experience as you walk through their historical and agricultural villages. The Manitoba Sugar Beet Producers Collection preserves the history of sugar beet production in Manitoba. It includes machines for sowing and harvesting the sugar beet, and also displays many objects related to the industry. With more than a century of photography history, The Laurent Fillion Collection features rare cameras and more common ones, from daguerreotypes dating back to 1850 to Land cameras of the 1970s. For more information on their other collections and upcoming events, visit www.museestjoseph.ca!

HISTORY COMES ALIVE

The **Fort la Reine Museum** features over 25 heritage buildings that exhibit the history of the Canadian Prairies. From Pioneering, Indigenous Traditions, Agriculture and Industrial Innovations, there is much to see! Special events and programs make your visit special. Take part in a Tea Party Tour, Escape Room Experience, the new Museum Corn Maze, Fright at the Museum, or Yuletide (Special events are offered on specific dates). Visit us at flrmuseum.com to learn more.

Located in the heart of the prairies and devoted to preserving the history of the town of Somerset and the Lorne Municipality, the **Somerset Lorne Citizens Museum** welcomes all! Come for a visit to see beautiful artifacts and displays donated and loaned from Lorne citizens, past and present. Displays include a world class gem and rock collection, military artifacts, historic homemaking items, and more! Learn more at www.facebook.com/SomersetLorneCitizensMuseum



Fort La Reine Museum,
Portage la Prairie



CRYSTAL CITY PRINTING MUSEUM

Home of the Rock Lake Herald and Crystal City Courier
Oldest operating print shop in Western Canada
The original machinery from 1881 - in action!

See Crystal City at www.louisemb.com
218 Broadway St. S, Crystal City, MB
ccprintingmuseum@gmail.com

Call ahead to
arrange your tour
204-873-2591

ADMISSION
Adults \$5
Students \$2
Under 5 Free

HISTORY COMES ALIVE

Since opening in 1978, the **Treherne Museum** has grown to include five buildings, boasting thousands of interesting artifacts and displays, including one of the largest gun collections in Western Canada. Showcasing over 140 different types of antique guns, including rifles dating back as early as the 1700's. Other features include a tiny replica town modeled after Treherne in the early 1900's, a pioneer house built in 1906, one of Manitoba's most complete blacksmith shops, and a collection of early farm machinery and agriculture-related implements. Make the trip to Treherne this year to experience this museum, and more! Visit our Facebook page to learn more at www.facebook.com/trehernemuseumMNT

Find Twice the historic fun in Miami at the **Miami Museum** and the **Miami Railway Station Museum**. The Miami Museum features a 40-foot mosasaur fossil, vintage fashion pieces, and other artifacts from a time gone by. Open in 1889, the Miami Railway Station Museum, now a national heritage site, was a working train station until the 70's. In present times, it is a rare surviving example of a Canadian Northern railway station — now home to a museum featuring railway history exhibits and a restored 1914 Canadian Pacific Railway Caboose. Guided tours are available by appointment. Visit us on our website at miamirailwaymuseum.com to learn more.

Visit Manitoba's first wind farm and **The Saint Léon Interpretive Centre**, dedicated to Environmental Awareness. Comprised of four interactive galleries on salamanders, birds, wind energy, and living green. Learn about the life cycle of salamanders, hear nature calls, and learn how to reduce our ecological footprint and help the environment. programs offered in French and English. Visit our website at www.stleon.ca to learn more!

This bilingual museum is two museums in one! **Musée des Pionniers et des Chanoinesses** is dedicated to the pioneers of Quebec and the old countries who rebuilt their lives in "La Montagne" with faith and courage. The Pioneers Museum offers a great display of artifacts describing life in late 1800's and early 1900's. You can learn about the first doctor, the first veterinarian and the founder of Notre-Dame. With models of the train station and a 1920's kitchen, you really step into a life from long ago. Half of the museum is dedicated to the "Chanoinesses", better known as "Les Soeurs du Sauveur", an order of religious women who came from France to help establish the community of Notre-Dame de Lourdes. This museum is a tribute to their education and apostolic work and ensures they will long be remembered. Come to www.notre-dame-de-lourdes.ca/museum to learn more!



The Treherne Museum, Norfolk

An advertisement for the Centre d'interprétation St. Léon. At the top, it says "Welcome to / Bienvenue à St-Léon" in a decorative font. Below this is a circular logo with a stylized 'S' and 'L' and the text "Centre d'interprétation St. Léon". The main image shows a large, modern building with a glass facade and a sign that reads "Centre d'interprétation St. Léon". Below the image, there is a green banner with white text providing visiting hours and contact information.

Visiting in July & August:
Mon - Fri: 10 am to 5 pm
Sat 10 am - 4 pm
Sun 12 - 4 pm
or by appointment throughout the year

Visit our website:
www.saintleon.ca

Contact Us:
204.242.4374
cistleon@gmail.com
35 Bale du lac

Camping & Picnic Area Available

A visit to St. Claude provides opportunities to see more than one museum attraction. First, a rare surviving example of a stand-alone community jail has become the **St. Claude Gaol Museum**. This one-room jailhouse has been immaculately restored for the enjoyment of guests each year. Their promise to visitors is that this is “the only place in Canada where you can have fun in prison.” While in town, don’t forget to also check out the **Manitoba Dairy Museum** which shares the story and evolution of early dairy processes through to the modern approaches used today. The museum grounds also include exhibits celebrating the successes of the industry.



Manitoba Dairy Museum, St. Claude



The name Nellie McClung is well known throughout Canada for her successes as both an author and a trailblazer for women’s rights. Nellie resided in the Pembina Valley and *Nellie’s Homes of Manitou* features two of the actual homes where McClung lived during her life in the area. Both the Hazel Cottage where Nellie boarded as a 16-year old teacher and the McClung House where she and her family lived for many years are furnished and decorated for visitors to tour and enjoy. Open from May to September, tours may be arranged by calling 204-242-2765 or nellieshomes.ca



Dufferin Historical Museum

Located in Carman's beautiful King's Park, this local community museum is committed to preserving local history and creating a space where history can be enjoyed by all ages. **The Dufferin Historical Museum** includes a main building displaying several exhibits such as a farming display, General Store, various Indigenous artifacts, and much more. Find out more at dufferinhistoricalmuseum.ca

Celebrating over 50 years of keeping our heritage alive the **Pembina Threshermens Museum** showcases acres of old-fashioned fun and adventure. Step back to the early 1900s when you enter the outdoor pioneer village museum. Featuring 16 historical buildings and vintage farm equipment, you're sure to have fun, the ol'-fashioned way. Visit our website to learn more at www.threshermensmuseum.com



Pembina Threshermens Museum



Musée des Pionniers et des Chanoinesses Museum



The Pioneers Museum is dedicated to those who came from Quebec and Europe who rebuilt their lives in the "Pembina Hills" with great faith and courage. The Chanoinesses Museum is a tribute to the nuns' education and apostolic work and their service to the community.



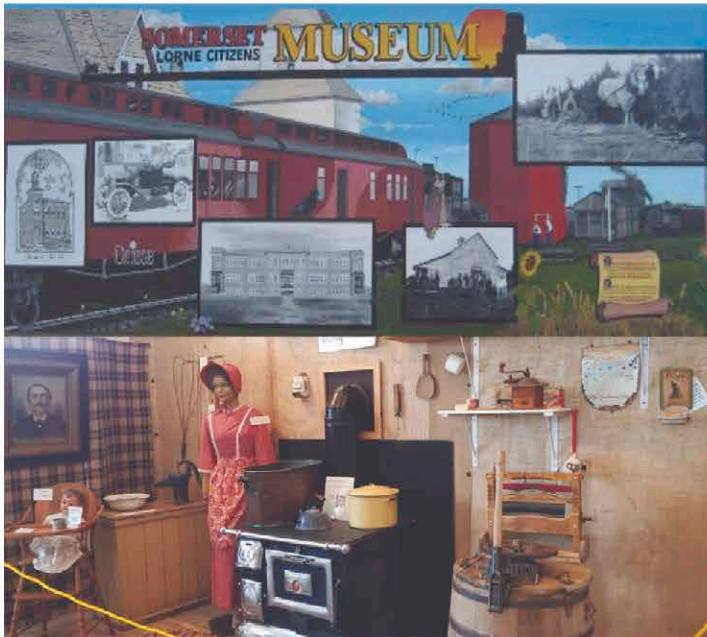
55 Rogers Street in Notre-Dame-de-Lourdes

Monday to Friday 8:30 am - 4:00 pm Self-guided, Weekends and guided tours by appointment only

Contact: 204-248-7290 or ndlmusee@gmail.com

www.notre-dame-de-lourdes.ca/museum

Geocache coordinates: N 49°31.853 W98°33.414



Somerset Lorne Citizens Museum

302 3rd St
Somerset, MB

204-744-2318
204-744-2146

slcmuseum@gmail.com

Pembina Valley Studio Tour

SEPTEMBER 14TH & 15TH, 2024

PEMBINA VALLEY STUDIO TOUR IS AN
ANNUAL SELF-GUIDED TOUR OF
ARTIST'S STUDIO'S AND GALLERY IN
THE PEMBINA VALLEY.

www.pembinavalleystudiotour.com

Museum Listing

Canadian Fossil Discovery Centre

111-B Gilmour Street, Morden

204-822-3406

discoverfossils.com

Crystal City Printing Museum

218 Broadway Street S., Crystal City

204-873-2591

louisemb.com

Darlingford School Heritage Museum

197 Bradburn Street, Darlingford

204-246-2232

Darlingford War Memorial

212 Bradburn Street, Darlingford

Dufferin Historical Society Museum

King's Park, Carman

dufferinhistoricalmuseum.ca

Elie Roman Catholic Convent

R.M. of Cartier

GPS: N49.90073, W97.76111

Fort la Reine Museum

2652 Saskatchewan Avenue E, Portage la Prairie

204-857-3259

flrmuseum.com

Fort Dufferin Historical Site

River Road West, Emerson

GPS: N49.03048, W97.20214

Holland Emmanuel Historical Church

114 Barr Street, Holland

204-526-2717

Jim's Vintage Garages

5353 Portage Avenue, Headingley

204-889-3132, Ext 4

jimsvintagegarages.ca



Manitoba Agricultural

Museum Highway 34, Austin

204-637-2354

ag-museum.mb.ca

Manitoba Baseball Hall of Fame

111-D Gilmour Street, Morden

204-822-4636

mbhof.ca

Manitoba Dairy Museum

3rd Street, St. Claude

204-379-2609

Manitoba World War I Museum

57130 16 North, Pilot Mound

204-825-2961

Marringhurst Heritage House

Argyle

204-825-2958

Miami Pioneer Museum

3rd Street at Kirby, Miami

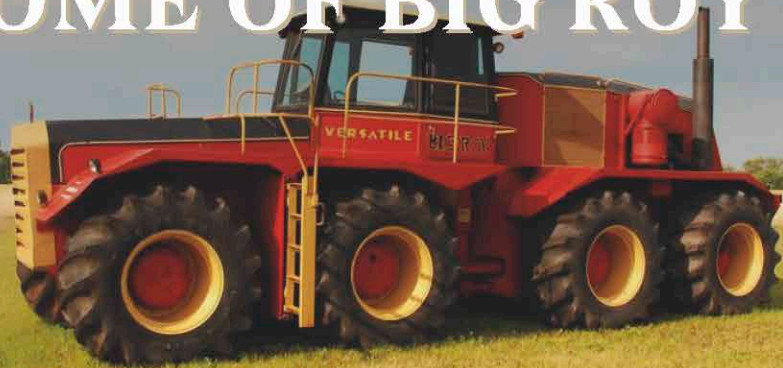
Miami Railway Station Museum

Highway 23, Miami

miamirailwaystationmuseum.com

3 KMS SOUTH OF AUSTIN ON HWY. #34
mbagmuseum.ca

HOME OF BIG ROY



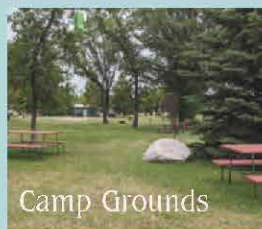
**MANITOBA
AGRICULTURAL
MUSEUM**

Bringing our Prairie Heritage to Life

Homesteaders' Village
Vintage Farm Machinery
Manitoba Threshermen's
Reunion & Stampede
Three Creeks Campground
Winter Wonderland
And more!



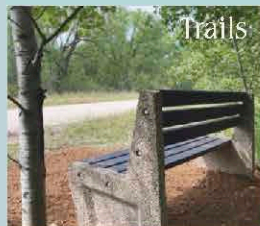
Memory Garden



Camp Grounds



Cenotaph



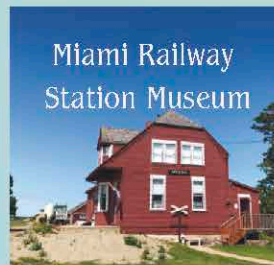
Trails



Winter Slide



Welcome to the
**RM OF
THOMPSON**
www.rmofthompson.com



Miami Railway
Station Museum



Miami Museum

HISTORY COMES ALIVE

Morris & District Centennial Museum

350 Main Street South, Morris
204-746-2169

Musee de Pioneers & Chanoinesses Museum

55 Rogers Street, Notre Dame de Lourdes
204-248-7220

notre-dame-de-lourdes.ca/museum

Musee St. Joseph Museum

25 Brais Boulevard, St. Joseph
204-737-2244

museestjoseph.ca

Nellie McClung Heritage Site

1 Main Street
204-242-2765

nellieshomes.ca

Pembina Threshermen's Museum

Highway 3, between Morden & Winkler
204-325-7497

threshermensmuseum.com

Pilot Mound Museum

213 Lorne Avenue, Pilot Mound

louisemb.com

Plum Coulee Elevator Museum

Main Avenue, Plum Coulee
204-542-0558
Instagram - Plum Coulee Elevator
Museum
Email - pcemuseum@gmail.com

Roland 4-H Museum

72 Third Street, Roland
roland4hmuseum.ca

Second Chance Car Museum

Railway Avenue & Vanzile Street, Treherne
secondchancecarmuseum.ca

Somerset Lorne Citizen Museum

302 3rd Street, Somerset

Star Mound Museum

Snowflake
GPS: N49.05975, W98.72491
louisemb.com



Photo credit: Paul Epp – Delta Beach



Miami Railway
Station Museum

HISTORY COMES ALIVE

**St. Ambroise Entrenchment,
Provincial Heritage Site**

St. Ambroise
GPS: N50.22673, W98.07728

St. Anne's Anglican Church

Highway 26, Poplar Point
GPS: N50.04392, W98.02364

St. Claude Gaol Museum

Provincial Road 240, St. Claude
204-379-2679

**St. Eustache Roman
Catholic Church**

St. Eustache
GPS: N49.97459, W97.77985

Saint Léon Interpretive Centre

35 Baie du Lac, St. Léon
204-242-4374

Ste Therese Chapel

R.M. of Lorne, 204-248-2372
GPS: N49.49421, W98.55431

Treherne Museum

183 Vanzile Street, Treherne
204-723-2044
treherne.ca

**The Old Mound
Little Dance Hill**

Municipality of Louise
GPS: N49.22472, W98.91239
louise.mb.com

Winkler Heritage Museum

Southland Mall
777 Norquay Drive, Winkler
204-362-2933
winklerheritagesociety.ca/museum.html



Winkler Heritage Museum

SAINT CLAUDE MUSEUMS

Service in English & French

July & August

**Monday - Saturday 10 am - 5 pm; Sunday 2 - 5
pm May/June & Sept/Oct, call for appointment**



MANITOBA DAIRY MUSEUM

Open July & August

Mile 60 Park, 3rd St., St. Claude
Phone: 204-379-2323 or 2609
E-mail: shstclaudes@gmail.com



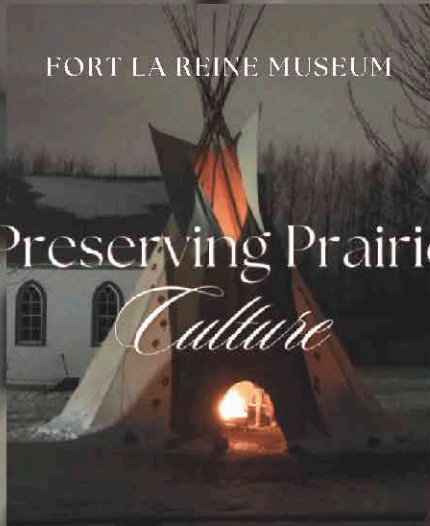
ST. CLAUDE GAOL MUSEUM

Open July & August

5, PR 240, St. Claude
Phone: 204-379-2679
E-mail: jmquayle@protonmail.com

FORT LA REINE MUSEUM

Preserving Prairie Culture



www.fortlareinemuseum.com

@FortLaReineHistory

@FortLaReine



38 Centre Avenue West
Carman, MB. R0G0J0
(204) 745 6568

Golden Prairie Arts Council is a community-based, non-profit organization that provides space, resources, and programming to uplift the arts. This includes resources and programming for music, dance, and visual arts. It provides a renowned art gallery, concert series, creative workshops, and music lessons. GPAC is governed by a Board of Directors and serves a large catchment area in Southern Manitoba, including the town of Carman, and the municipalities of Dufferin, Grey, Roland, and Thompson.

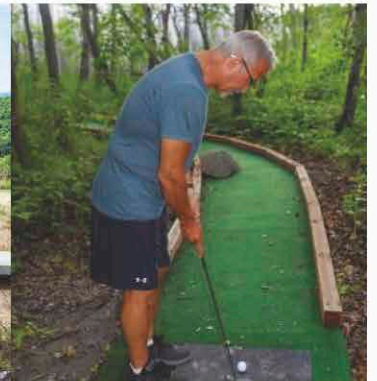
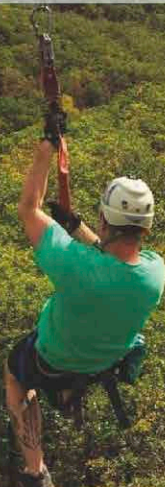


- 5 cable tour
- 8 cable tour (Manitoba's highest and longest ziplines!)
- 18 hole Mini Golf
- Licensed Diner and Patio
- Bush Maze
- Space ball Ride
- Hiking Trails
- Beach Volleyball

HYWIRE ZIP LINE ADVENTURES

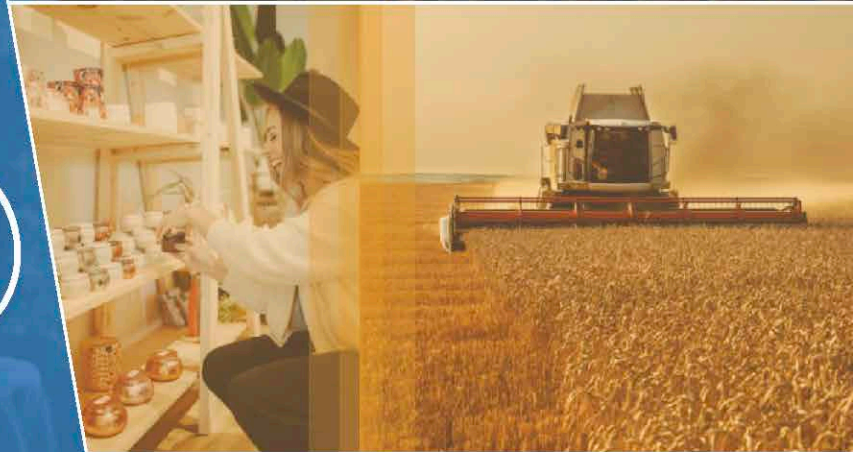
204-242-3396

ADVENTURE AWAITS!
BOOK NOW!



HyWireZipLine.ca

WINKLER
Harvest
FESTIVAL



CITY OF
winkler
DREAM. BUILD. LIVE.



yeswinkler



City of Winkler

WWW.VISITWINKLER.CA

MERIDIAN
EXHIBITION CENTRE

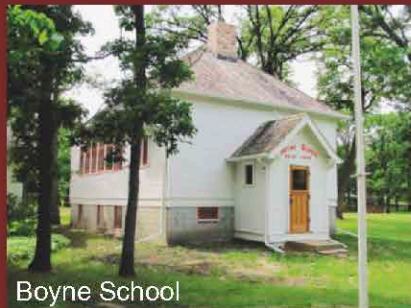
Let us share

HOURS OF OPERATION:

June, July & August
Tues - Sat 10:00 - 5:00 pm
Sunday: 1:00 to 5:00 pm

GPS coordinates:

49 degrees 30.178N
98 degrees 00.621 W



Boyne School




our stories

ADMISSIONS:

Adult: \$8.00
Students: \$5.00
Under 5: Free

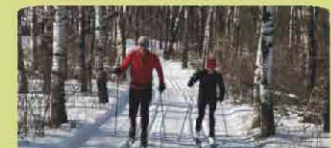
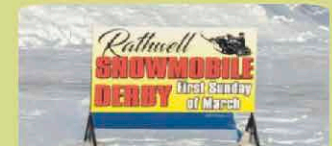
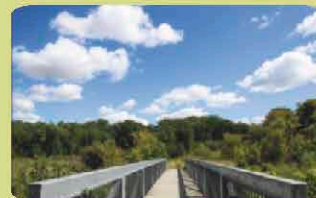
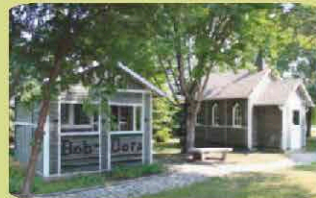
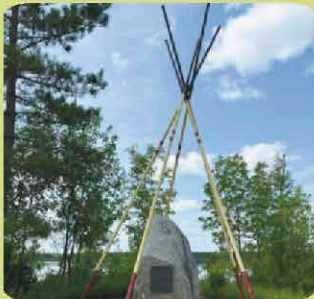
info@dufferinhistoricalmuseum.ca

www.dufferinhistoricalmuseum.ca

 LIKE us on Facebook



1870's Sexsmith-Morgan Log Home





Walking Track

The New Meridian Exhibition Centre

WORK & PLAY IN WINKLER

A 7-year concept in the making, the brand-new **Meridian Exhibition Centre** is open! This sprawling, modern facility was designed to exceed Winkler and the surrounding areas' needs for recreation, events, and professional gatherings. Walking through the doors, the walls rise around you in clean, intersecting lines that lend to the enormity of the building. Artfully designed, grey-scaled concrete with pops of orange and yellow create an aesthetically pleasing, contemporary experience. Towering, floor-to-ceiling windows cast natural light into every room, drawing the outside in.

RECREATION

The recreation portion of the building consists of a **fieldhouse**, ice arena, and walking track. The fieldhouse is vast; there are 19,000 square feet of squishy turf for soccer, ultimate frisbee, disc golf, and other activities. Above the space are bleachers that seat up to 180 spectators.

The **ice arena** has even more to celebrate. It's massive, boasting an NHL sized ice sheet, 6 dressing rooms, and nearby concession. It's also one of the only sledge-hockey facilities in Manitoba. Spectators, rejoice! The nearly 400 bleachers have heated flooring, so your toes stay toasty while you watch.

For day users, the 115-meter **walking track** overlooks the soccer pitch and ice arena, so you're entertained while you walk or jog.

EVENTS

Large-capacity events will find their forever home at the **MEC**. Seasonally, the fieldhouse is transformed into a **Community Hall** by laying hard floor paneling over the turf. This ultra-strong feature is capable of handling sprinter vans and other vehicles for setup and teardown. A large-scale catering kitchen, multiple concession stands, and mobile bars are also available to utilize, which transform and diversify event-types.

In the **Community Hall**, the towering, 19,300 square foot open-concept space is made bright by floor-length windows. Overhead, copper paneling creates an industrial yet welcoming sophistication. This 1,200-person space is ideal for conferences, tradeshow, banquets, and vendor markets.

PROFESSIONAL GATHERINGS

Walking up the wide staircase to the second floor, guests enter the open **lounge**. Leather chairs, couches, small tables, and artwork decorate the space, which is perfect for couples or small groups to rendezvous in.

Clients can also hold business meetings in the professionally equipped **meeting rooms**, which overlook different areas of the MEC and offer plenty of natural light. The **Executive Meeting Room** comfortably hosts up to 14 for corporate gatherings and has oversized windows and a floor-to-ceiling view of the **fieldhouse**.

THE MERIDIAN EXHIBITION CENTRE

Gatherings aren't just for adults though! Children will love the new state-of-the-art **Play Room** in the heart of the building. It includes a mini stick hockey area and an FX interactive projection system that tracks movements and gestures, so kids can interact with audiovisual effects, transporting them into new worlds of entertainment.

The **MEC** of Winkler, with its streamlined, ultra-modern facilities, naturally lit spaces, and highly accessible layout will draw residents and visitors for generations to come. The facility offers something for everyone, from corporate clients to hockey families, and is completely mobility accessible. You can glide across the arena in ice skates, do laps in sneakers around the walking track, or click your heels at the head of the Executive Meeting Room.

Bring your family, friends, or coworkers and a few changes of shoes and join us for your next activity or event at the **Meridian Exhibition Centre**.

To find the many different ways you can experience the Meridian Exhibition Centre, please visit www.theMEC.ca and be sure to follow the City of Winkler's Facebook page at www.facebook.com/cityofwinkler



Meridian Exhibition Centre – Aerial View



High Adrenaline Adventures

It's true, the vast open prairies and the rolling hills of the Pembina Valley are a destination for many looking to enjoy the soundtrack of nature, marvel at spectacular sunsets and gaze up at endless starry skies. But that doesn't mean that we don't have something in store for those whose heart beats at just a little higher tempo. The Central region is also home to some events and attractions that offer thrills and an opportunity for adventure that you won't soon forget.

Prairie Hill Mx is one of Manitoba's premier motocross facilities. Working with the Manitoba Motocross Association hosting races for the Provincial Championship series. Located in the Municipality of Louise near Pilot Mound, they are celebrating their 14th year of operation in 2023 and continue to develop their site to provide the best experience for both the racers and fans alike. Along with races they also host open practices, private riding days and have even hosted a wedding. For more information call **204-825-4288** or catch them on Facebook at [prairiehillmx/prairiehillracing](https://www.facebook.com/prairiehillmx/prairiehillracing)



*Prairie Hill Mx,
R.M. of Louise*

HIGH ADRENALINE ADVENTURES

A full mind and body workout is promised on the largest indoor climbing wall in western Manitoba at the **Central Plains Rec Plex** at Southport, just 3 kilometres south of Portage la Prairie. Improve your strength, endurance and skill on their 30-foot climbing wall with multiple routes to choose from. The facility is also home to a running track and fitness centre as well as **Southport Bowl**, a five-lane five pin bowling alley offering league play as well as special event bookings for private functions. Their website centralplainsrecplex.com offers more detail.

If soaring through the air gets your heart pumping, then you want to head to Manitou and buckle up for **Hy Wire Zipline Adventures**. Where else can you soar at heights of up to 200 feet over the scenic Pembina Valley? Offering Manitoba's longest and highest ziplines, this destination offers eight different lines and options to experience the full course, a partial course and even a single line "bucket list" special for those who just want to sample the experience for the first time. Open daily, groups of up to 15 may be scheduled per session. Be sure to check out the anti-gravity space sphere while on site as well! Schedule your adventure by calling 204-242-3396 or visit hywirezipline.ca



St. Jean ATV Derby



*Central Plains Rec Plex,
Southport*

In the small community of St. Jean Baptiste Manitoba, you will find Canada's Largest ATV Derby. The **St. Jean ATV Derby** is a weekend long event held on the third weekend of September. The trail, about 40 kilometres in length, is located along the scenic Red River and is sure to challenge even the most experienced ATV enthusiast. They start off the weekend with "Friday Night Lights" mud bog contests and evening entertainment. Saturday morning starts with registration, silent auction & quad raffle tickets before you hit the trail. Lunch can be found about half way through the trail, with homemade soups, chili, burgers, hot dogs, snacks & drinks. With the check stops along the way, you can take a rest to enjoy riding through mud holes or watch the machines go tearing through or getting stuck. Upon return to the park, you can enjoy supper from one of their vendors, canteen or stick around for the draw for prizes and evening entertainment. Visit us at www.stjeanatvderby.ca to learn more.

Runners of all ages and abilities challenge the course each fall at the Rotary Republic Park for the **Portage the Prairie Dirt Dash**. Co-presented by the Portage Community Revitalization Corporation and the local Rotary club, this annual event challenges runners with a series of skill-testing obstacles and, of course, mud. With new obstacles added to the course each year, the great equalizer of the course is dubbed "Goliath" and has stymied even the hardest of competitors. Dash as an individual or compete as a team and dress to impress with your family and friends.



*Hy Wire Zipline
Adventures,
Manitou*



*Portage the
Prairie Dirt Dash,
Portage la Prairie*

Find Your Groove

For fans of live music, Central Manitoba offers a wide variety of venues and events to see your favorite artists (and future favorites you've yet to discover) in intimate and interactive settings. Here, the setting shares equal billing with the artists themselves in creating a lasting memory that will forever connect you with this region. In addition to concert theatres and arts venues, this area is also home to some of the most highly anticipated music festivals in the Province.

The **Harvest Moon Festival** celebrates the harvest season and local food production which is at the heart of Manitoba's economy, while providing a venue to link our rural and urban communities. The festival is a key to promoting the generous spirit of the host town of Clearwater, the talents of local artists, mouth-watering produce of local growers and the Harvest Moon Learning Centre while enjoying the embrace of the Pembina Valley. The festival welcomes over 2,000 patrons annually and the revenue generated from the event offers an economic boost to Clearwater organizations and businesses and the Municipality of Louise. Get the latest news on the upcoming line up at harvestmoonfestival.ca



*Harvest Moon Festival,
Clearwater*



Visitors to Cypress River have come to recognize this Highway 2 community as the 'Little Town with the Big Sound' thanks in large part to the **Prairie Wind Music Festival** which has been hosted for the past seven years. The event presents a diverse blend of music and boasts that the small town hospitality, intimacy and production quality at this event venue are what make it a 'must attend' event each year. See some of Canada's hottest acts sharing the bill with emerging artists while celebrating music and community. Featuring rock, blues, country, old-time, jazz and children's music — the line up offers something for everyone. Stay in touch with us at prairiewindmusicfest.wordpress.com

FIND YOUR GROOVE

Free your spirit at **Whoop & Hollar Folk Festival** — the signature event of the R.M. of Portage la Prairie in 2023. Share in the warmth of an authentic grassroots festival, featuring some of the very best Manitoba musicians playing over an entire weekend. Experience the true heart and spirit of the prairies, while walking the winding nature trails, enjoying the wild pollinator garden, and discovering the magical assortment of trees. Dance the night away, bring an instrument and join a jam session, or perform at an open mic in the quaint red barn. Fun for all ages! Be sure to check out the interactive workshops and "Creative Corner" art station, plus "Artisan Alley" featuring a variety of artwork and handmade gems.

Food vendors will cater to a variety of tastes (picnics are welcome). Free tent camping Friday & Saturday with weekend pass. Tickets, performers, and details at whoopandhollar.com.



*Whoop & Hollar Folk Festival,
R.M. of Portage la Prairie*



GROWING. STRONGER. TOGETHER.

carmanmanitoba.ca



Darlingford

HISTORY • HERITAGE • COMMUNITY SPIRIT



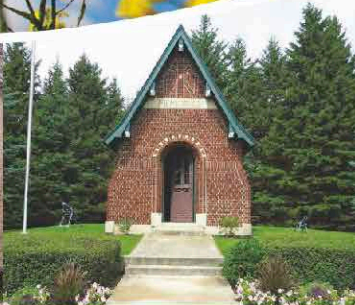
SCHOOL MUSEUM

Our School, built in 1910, now offers four rooms with historic artifacts. Imagine the life of an early homesteader, learn about “Old” Darlingford and “New” Darlingford, view WW 1 and WW 11 exhibits, and enter a vintage multi grade school classroom.
Open weekends, June 10 – Sept. 10, 1 – 5 pm, and by request.

Call 204-246-2968 or 204-823-0626.

Wheelchair accessible.

197 Bradburn St.



MEMORIAL PARK

This unique memorial was dedicated on July 5, 1921. Instrumental in its creation was Ferris Bolton, who lost three sons in WW1. Tablets inside the Chapel display the names of 223 local veterans who served and died in both World Wars. They are recognized at the annual Memorial Service.

Annual Memorial Service with lunch to follow, July 14, 2024

Guided tours by museum staff or email darlingfordmemorialpark@gmail.com



ZION-CALVIN UNITED CHURCH

Built in 1908, it is a well preserved example of a wood frame Gothic Revival Church. View the landmark bell tower that is still rung on occasion and sit in the original pews and feel the calm that surrounds you.

Sunday services at 9:30 a.m. year round. Guided tours by museum staff.



COMMUNITY HALL

This is an excellent modernized facility to hold community events and private functions. The variety of events that bring us together help to nurture our community spirit especially when a meal is involved.

Rentals 204-332-1265

Events already scheduled are:

Fall Supper, Oct. 27 (204-246-2187)

Craft Sale, Nov. 16 (204-246-2351)

Wheelchair accessible.

Experience the Arts

Arts and culture are no longer the exclusive domain of large urban centres. Over the past several years, the appetite for the arts and the talents of rural artisans has come into focus with a growing number of community arts associations and rural galleries. Central Manitoba is home to some of these destinations which both feature the works of celebrated artists, but also are serving to introduce newcomers to the arts and unlock the creativity of a new generation of emerging talent across the prairies.

Altona's **Gallery in the Park** was established in 2007 in the former Schwartz heritage house to celebrate the centennial of Friesens, one of Canada's premier book printing companies. The art and sculpture gallery which is open from May to October has hosted art showings by leading artists such as Luther Pokrant, Ray Dirks, Peter Sawatzky and Leo Moll. Admission is free to rural Manitoba's leading art and sculpture gallery. You can find out more at galleryinthepark.ca



Gallery in the Park,
Altona



Prairie Fusion Arts & Entertainment



The arts community in Carman convenes at the **Golden Prairie Arts Council** — a non-profit organization that offers educational programming. Situated in a heritage building, their venue houses their exhibition art gallery, workshop and music rooms in addition to a gift shop and outdoor courtyard. Find out what exciting exhibition is in store for the coming months or sign up for one of their classes for adults or children in either visual or performing arts and discover your artistic abilities. Please visit goldenprairieartscouncil.com to see all the reasons you need to visit soon.

Patrons of the arts may know the **Prairie Fusion Arts & Entertainment** for its three galleries which host exhibits from artists ranging from local talent to nationally celebrated artists. But the Centre also nurtures the talents of those who are just discovering their artistic abilities as well with classes in paint, sculpture, dance and much more throughout the year. On site, the 440-seat William Glesby Theatre also offers a dynamic schedule of events and performances throughout the year. Learn more at prairiefusion.ca

At **Winkler Arts & Culture** they are not only fostering an appreciation for the arts but are focused on celebrating the culture that brings art to life. Their gallery, housed in a modern and somewhat industrial-themed design, hosts a variety of exhibitions and special events throughout the year as well as being available for rentals for special events. Their website offers a unique opportunity for artists in the community to submit their work for consideration on their website and social media galleries, to be part of a group exhibition, to be featured for a solo show, or to be offered for sale in their gift shop. Visit winklerarts.com to explore more.

What began as a gathering of artists collaborating to exhibit and sell their work in 1988 has grown to become a hub for both the visual and performing arts in Morden and surrounding area including ten municipalities, two cities, two towns and a first nation. The **Pembina Hills Arts Council** makes its home in a distinguished legacy building on Stephen Street where it houses its gallery as well as offers a variety of classes throughout the year. The organization's reputation as a champion for the arts has also led to partnerships with other organizations and their site often serves as the ticket outlet for concerts and events coming to the area. Visit pembinahillsarts.com for an in-depth look.



In Crystal City, the [Parklane Theatre](#) has become the hub for local performing arts in the Municipality of Louise, live theatre and concerts. Opened in 1953 following the dismantling of the Royal Music Hall & Deluxe Theatre which had been on the same site, live productions and events are hosted at this unique venue. Performers who have graced the stage here claim that the Parklane Theatre has the best acoustics of all their touring stops. You can keep up to date with the latest schedule announcements on their Facebook Page [@Parklane Theatre](#) or website [louisemb.com](#)

One of the most acclaimed wildlife carvers in North America resides in our area and crafts his creations from the [Loon Magic Art Studio](#) in Plum Coulee. Artist Neil Fehr is best recognized for his customized antler carvings which have been implemented into handles for knives, fishing rods, or just as a stunning piece of its own. Capturing wildlife in vivid detail, Neil's work has drawn the attention from buyers and collectors around the world. His gallery is open to the public, by appointment by calling 204-829-3236.



EXPERIENCE THE ARTS

The performing arts aren't limited to just indoors — Annette Heal has been the driving force for the last decade to present an outdoor series of performances under the banner of **Concerts in the Park**. Held at the outdoor bandstand on Portage la Prairie's Island Park, this Thursday evening concert series held during the months of July and August are free to the public and feature a variety of emerging and established artists from across Canada. Concerts in the Park was recognized as the 2018 CMT Event of the Year with a budget of under \$5,000. Bring a lawn chair and stake your preferred spot to enjoy the show.




The experience of live theatre is amplified by the overwhelming setting at Oak Valley's outdoor amphitheater at La Riviere. Celebrating their 24th season in 2023, Manitoba's Award-Winning **Passion Play**, based on the biblical account of Christ has been performing before enthusiastic audiences each summer. Be sure to get your tickets early as these performances are held only during two weekends each July. Learn more about this spectacular venue at passionplay.ca

In Morden, Central Manitoba has retained a unique attraction from the past as home to one of only three remaining drive in cinemas in the Province. Once a common site on the prairie landscape, most theatres of this style have since closed. But Morden's **Stardust Drive-In** keeps the traditional of open-air cinema alive. Located near the Lake Minnewasta recreation area, the iconic screen is easy to spot from the highway and presents feature Hollywood blockbusters each weekend at dusk throughout the summer.



Golfing

It's true what they say: A bad day on the golf course still beats your best day at the office. Whether you're looking for a quick afternoon retreat or are planning a golf vacation, Central Manitoba is sure to have the course that offers the challenge that you're looking for. Offering the calm of the country setting we are home to a variety of both nine and eighteen-hole courses that we're sure you're going to want to try again... and bring a friend.



COME AND ENJOY OUR 9 HOLE COURSE

EMERSON GOLF COURSE

Get More Info:

204-373-2015

5 South Ave, Emerson, Manitoba

EmersonGolf

emersongolymb@gmail.com

18

Hole Courses

	Club Rentals	Cart Rentals	Dining Room	Pro Shop	Golf Lessons	Driving Range
Breezy Bend Country Club	●	●	●	●	●	●
Bridges Golf Course (Starbuck)	●	●	●	●	●	●
John Blumberg Golf Course	●	●	●	●	●	●
Carman Golf & Curling Club	●	●	●	●	●	●
Kingswood Golf & Country Club (La Salle)	●	●	●	●	●	●
Minnewasta Golf & Country Club	●	●	●	●	●	●
Portage Golf Club	●	●	●	●	●	
Scotswood Links (Elm Creek)	●	●	●	●		
Winkler Golf Club	●	●	●	●	●	●



Welcome to Minnewasta Golf & Country Club



(204) 822-4992  GolfMinnewasta.com

19 Buhler Drive P.O. Box 68 Morden, Manitoba R6M 1A2



9

Hole Courses

	Club Rentals	Cart Rentals	Dining Room	Pro Shop	Golf Lessons	Driving Range
Emerson Golf Course	●	●	●	●		
MacGregor Town & Country Golf Club	●	●	●	●		
Manitou Golf	●	●	●	●		
Miami Golf & Country Club	●	●	●	●		
Morris Golf	●	●	●	●		
Oakview Golf & Country Club (Gretna)	●	●	●	●	●	●
Pilot Mound Town & Country Club	●	●	●	●		●
Roland Golf Course	●	●	●	●		
Southport	●	●	●	●	●	●
Treherne Delahunt Golf & Country Club	●	●	●	●		



Thrill of the Grill

212 1st Street,
Morden, Manitoba
R6M 1P4
431-486-9030



Download our
app for the
best prices
and current
info

204-745-2366

Hwy 245 West



www.carmangolfandcurlingclub.com
dean@carmangolfandcurlingclub.com



**CARMAN & COMMUNITY
CHAMBER OF COMMERCE**

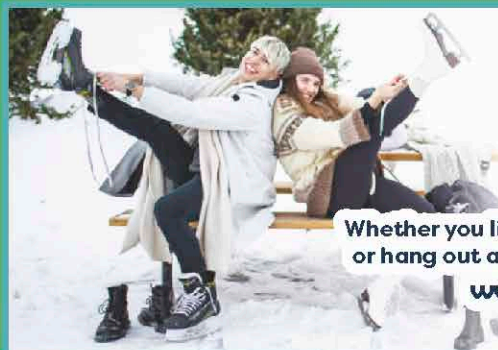
BUILDING OUR BUSINESS COMMUNITY

204-750-3050 📞

[carman_c_of_c](https://www.facebook.com/carman_c_of_c) @

info@carmanchamber.ca ✉

www.carmanchamber.ca



Whether you like to hike, fish, bike, canoe, skate, sit by the campfire
or hang out at the beach, Lake Minnewasta has something for you!

www.mymorden.ca/lake-minnewasta





Camping

ALTAMONT

Altamont Centennial Park
204-744-2246

ALTONA

Altona Centennial Park
204-324-9005

ARDEN

Lansdown Centennial Park
204-368-2403

AUSTIN

Manitoba Agricultural
Museum & Campground
204-637-2354

CARMAN

King's Park
204-745-2684

CRYSTAL CITY

Crystal City Campground
204-245-0680 / louisemb.com

CYPRESS RIVER

Agricultural Sports Grounds
204-743-2123

DARLINGFORD

La Verendrye Wayside Park
Medicine Line Guest Ranch
204-246-2173
Pembina Valley Camp
204-246-2008

EMERSON

Emerson Centennial Park
204-373-2002
Prairie Oak Beach & Campground
204-304-1445

HOLLAND

Holland Agricultural Grounds
204-526-2263

LA RIVIERE

La Riviere Centennial Campground
Oak Valley Park
204-242-2509

LETELLIER

Letellier Community Park
204-737-2329
204-737-2681

MANITOU

Manitou Centennial Park
204-242-2838
Mary Jane Park — R.M. of Pembina
204-242-2825
204-242-2235
204-242-2554

MACGREGOR

MacGregor Lions Club Campground
204-685-2582

MIAMI

Miami Citizens Park
204-435-2457

CAMPING

MORDEN

Cornerbrook Farm Campground

204-822-5099

Lake Minnewasta Recreation Area

204-822-4991

Morden Tourist Park

204-822-5431

Happy Bones Ranch & Campground

204-822-4756

Post Road Vistas Campground

204-822-5887

204-325-2460

Stardust Drive-in Campsites

204-822-5253

Stanley Centennial Park

204-822-6251

MORRIS

Big "M" Centennial Park

204-746-2169

Scratching River Game & Fish Park

NOTRE DAME

Notre Dame Campground

204-248-7290

OAKVILLE

Morrison Sports Park

204-267-2577

PILOT MOUND

Pilot Mound Campground

204-245-0680 / louisemb.com

PLUM COULEE

Coulee Campground

204-324-5357

PORTAGE LA PRAIRIE

Creekside Camping & RV Park

204-267-7002

Delta Beach Campground

204-857-7772

Lynch's Point Campground

204-274-2725

Miller's Camping Resort

204-857-4255

Portage Industrial Exhibition Campground

204-857-3231

RATHWELL

Bambi Gardens Campground

204-749-2203

ROCK LAKE

Trail's End Campground

204-825-8335

ROLAND

Roland Centennial Park

204-343-2061

SIDNEY

Shady Oaks RV Resort & Campground

204-466-2777

CAMPING

SOMERSET

Somerset Centennial Park
204-744-2171

ST. AGATHE

Parc Cartier Park Campground
204-882-2696

ST. CLAUDE

Mile 60 Park Campground
204-379-2469

ST. FRANCOIS XAVIER

Winnipeg West KOA
204-864-2201

ST. JEAN BAPTISTE

St. Jean Regional
Recreational Park
204-758-3517

ST. JOSEPH

St. Joseph Campground
204-737-2244

ST. LEON

Interpretive Centre
204-744-2821

STEPHENFIELD

Stephenfield Prov. Recreation Park
204-828-2366 / 204-242-2950

SWAN LAKE

Royal Canadian Legion Park
204-836-2358

TREHERNE

Cottonwood Campground
204-723-2044

WESTBOURNE

Ofty's Riverside Campground
204-274-2705

WINKLER

Winkler Tourist Park
204-325-8333
Winkler Campground
204-325-8212



LIVIENNE

— bridal boutique —

- @LIVIENNEBRIDAL
- 204-325-5595
- 258 MAIN AVENUE, PLUM COULEE



STEPHEN STREET GENERAL


ANTIQUES, FLORALS & MORE

EST. 2022

FORT DUFFERIN

Open Daily May through
the end of September
sunrise to sunset.

Come walk the self-guided tour and
explore the interpretive centre to
view the many displays.

 Fort Dufferin



204-822-4636

www.mbhof.ca

111C Gilmour St, Morden

Manitoba Baseball Hall of Fame & Museum Visit and Relive Manitoba's Baseball Past

Come check out displays of uniforms,
biographies, builders, Manitoba players,
and memorabilia dating back to the 1900's



You Gotta Eat Here

Close your eyes and you experience it all over again. The ambience, the flavors, the aromas and the experience of a great meal in a quaint bistro that you discovered on your travels. It's true that a great dining experience can become the hallmark of a vacation that you love to share with others — the first memory you recall of your visit, and the tip that you want to share with anyone you know who plans to visit that same destination. Be sure to treat your taste buds to some of our signature local fare on your next visit.

"Every day something good is cooking" in Portage la Prairie at **Over the Coals**. Serving a wide range of Greek specialties, flame broiled chicken, and their famous pork strips, everyone in your party is sure to find a dish to enjoy. They prepare each meal fresh to order, and are committed to giving their guests the finest quality food and service at the most comparable price. Offering dine-in at their licenced restaurant on Saskatchewan Ave. E, pick-up, and delivery to the Portage and Southport area, let Over the Coals do the cooking tonight. Learn more at www.overthecoals.ca



Enjoy a night out in Winkler at **Smitty's**. Relax in front of the fireplace or stop at the bar to watch a sports game on their large flat screen TV's. The large semicircular booths and couches are ideal for intimate gatherings or to relax after a hard day's work. Enjoy their delicious lounge menu or check out their selection of late-night specials. Drink specials featured daily and wing nights every Tuesday and Saturday night. A hot spot for Winnipeg Jets games, Monday night NFL football, and Supercross, along with great local bands and weekly trivia nights to keep things interesting. Visit us at our website qualityinnwinkler.com to learn more!

You're in for a treat when you visit **Clearwater Junction Restaurant**, located in the heart of Clearwater. Offering fresh, authentic and homecooked meals, it's more than just a diner and coffee shop. Open daily for breakfast and lunch Monday to Thursday and then Breakfast, lunch and dinner Friday, Saturday and Sunday. Lunch offers a selection that is straight from the heart featuring such favourites as soup with house-made noodles, and sandwiches piled high with locally sourced meats and produce. For supper, you'll be delighted by a menu that is altered daily to delight diners with new flavours throughout the season. With everything made from scratch, this bistro is one of the region's premiere destinations for supper.





Experience authentic German cuisine at **Crazy Lady's Cafeteria and Take Out** in Carman. Serving meals made from scratch in a cafeteria style restaurant, the friendly and welcoming staff make you feel like one of the family. Their specials change daily along with a selection of homemade soups. Fresh schnitzel in made many unique ways are a local lunch favourite. Don't forget to check out their well-stocked freezers on your way out for an easy and quick supper at home.

Delight your sweet tooth at **Annajo's Bistro** in Plum Coulee. Food lovers beware, you're in for a tasty surprise! Their full breakfast, lunch and dinner menus will satisfy your hunger, but save room for their fresh made desserts and specialty coffees. Serving out-of-the-ordinary, great homemade food — NOT fast food. For more information visit annajosbistro.wixsite.com/annajosbistro or follow them on social media @annajosbistro for drool worthy food photos.

Winner of the Central Manitoba Tourism 2020 Tourism Innovation Award, the **Altona Hotel** has brought a depth and variety of activities and events into Altona. The **Altona Coffee House** is Altona's premier coffee, breakfast and lunch spot. All of their food is made fresh in-house, using the finest ingredients available and using local whenever possible.

Grumpy's Bar & Grill is Altona's local spot. Home to some great times, great food, great people and of course ice-cold beer. The patio is the perfect spot to unwind after a long day while enjoying one of their signature burgers and a cold one. Learn more at www.altonahotel.ca/eat-drink

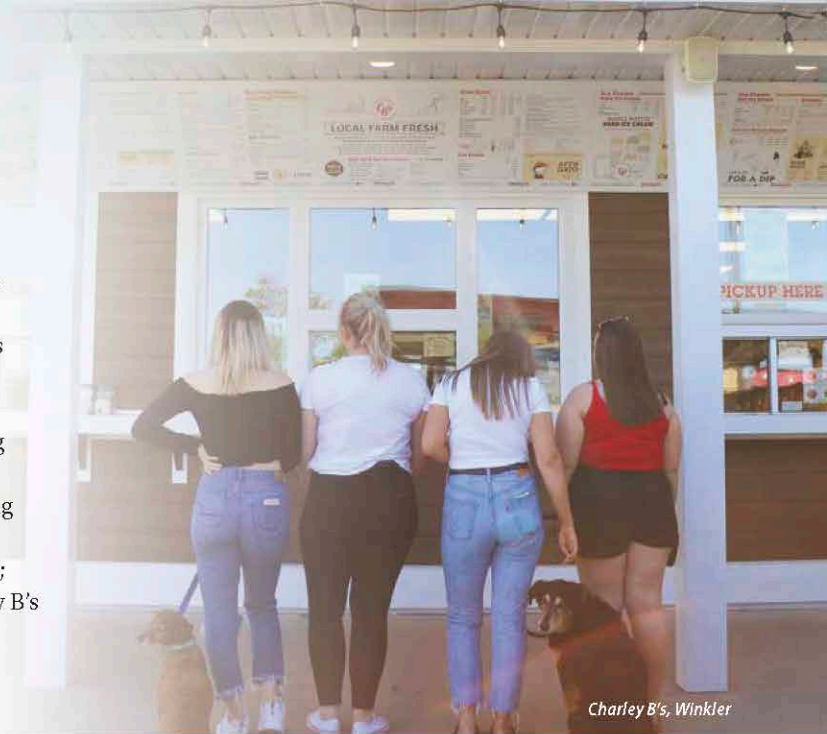
Discover authentic Mexican food in Portage la Prairie at **Mole Guacamole**. Don't miss out on homemade mole described as "the best thing I ever had". Other authentic family recipes on their menu include Sopas, Chimichangas, and Lime Margaritas! All of these are made daily from fresh ingredients and passed down through many generations. Learn more at www.bestmoleguacamole.com

Explore the Morden Winkler area through your taste buds! **Explore Morden Winkler** is putting their local restaurants to the greatest test. The taste test. Over 20 restaurants are serving up their very best and letting YOU choose the winner. The heat is on for Burger Week, Pizza Week, and French Fry Week, with more to come in 2023. Visit us at exploremordenwinkler.com



YOU GOTTA EAT HERE

Charley B's is a burger and ice cream joint located 850 Main St. Winkler focusing on serving the community with local, quality ingredients. You will find classic flavours with a unique twist at this small city drive-in. Open the warmest 8 months of Manitoba's year, offering take-out at it's finest; just ask the locals. **Charley B's** creates small batch hard ice cream; flavours contrasting from Classic Chocolate to In-Season Fruit Crumble and anything in between. Ice cream isn't the only place they shine, taste one of their mouth-watering burgers. Their biggest and baddest is the Big Bad Wolfe Burger. A freshly made beef patty slapped onto a sizzling hot grill beside local farmer sausage, smoked ham and crispy bacon, 2 kinds of cheese and simple mayonnaise; a drive-in's take on local Winkler cuisine. Make Charley B's a MUST-EAT next time you visit Southern Manitoba. Visit us online at charleybsgrill.ca



Charley B's, Winkler



Charley B's

CLASSIC GRILL & ICE CREAM PARLOUR

LOCAL FARM FRESH

WINKLER, MB

HAND PRESSED BURGERS

SMALL BATCH ICE CREAM

charleybsgrill.ca



YOU GOTTA EAT HERE

Over the last 40 years, the **Somerset Food Bar & Lounge** has not only become a staple of the community, but a benchmark in “small town dining”. It’s the commitment from their family & staff to serving better food with bigger smiles that has made them the best kept secret restaurant in Manitoba. Check out their flame grilled burgers, the greatest ribs ever, pizza, steak, really famous fried chicken and so much more! Learn more at www.hellofoodbar.com

Come for the taste, stay for the visit at **Coffee Culture Café & Eatery**. With locations in Morden and Winkler, it’s the perfect place to stop for a quick snack or lunch, and a specialty drink. Coffee culture is redefining the European café experience with artisan crafted coffee beverages, fresh food & a décor that exudes a casual, cozy & relaxing ambiance. Visit us online at www.coffeeculturecafe.com to learn more.

In Treherne, you find a serving of nostalgia at **L&J’s Drive Inn**. Serving up classic drive-in foods, they have a menu full of beef and chicken burgers, fried chicken, fries and other sides, and of course ICE CREAM! Are you gluten free? You can eat here! Open seasonally for the summer months, L&J’s is a must stop on your next road trip. Learn more at ljsdriveinn.ca



Somerset Food Bar & Lounge, Somerset



Coffee Culture Café & Eatery, Morden & Winkler



L&J's Drive Inn, Treherne

RESTAURANT DIRECTORY

ALTONA

Altona Diner

119-67 2nd Street NE
204-324-6656

Altona Hotel & Altona Coffee House

61 Centre Avenue E
204-324-5241

Ang's Pizza & Bakery

58-2nd Avenue NE
204-324-8955

Chicken Chef

5 Centre Avenue E
204-324-1200

Four Winds Motel

PTH 30
204-324-5305

Lok Lok Garden Restaurant

54 Main Street
204-324-6041

Oma's Kitchen

67-2nd Street NE
204-324-5360

Pizza Haven

36-2nd Avenue NE
204-324-8772

Potpourri of Flavours by Jose

115-4th Avenue NE
204-324-1623

Subway

46-6th Street SE
204-324-8890

The Ice Cream Hut

63-4th Avenue NE
204-324-6836

AUSTIN

Austin Bake & Coffee Shop

30-2nd Avenue
204-637-2028

Hill Top Inn

PTH 34
204-637-2526

Subway

Highway 1
204-637-2080

CARMAN

Bell Aura Bistro

77-2nd Avenue SW
204-745-6088

Breakaway Family Restaurant

10-4th Avenue SW
204-745-6785

Carman Motor Inn

44 Centre Avenue W
204-745-3733

Chicken Chef

22-1st Street SW
204-745-2031

Crazy Lady's Cafeteria & Take Out

204-745-2722

McGee's Original Grill

96 Main Street N
204-745-5099

Subway

82-4th Avenue SE
204-745-3698

Syl's Drive In

132-4th Avenue SE
204-745-2432

Tidbit Restaurant

74 Main Street S
204-745-6448

Tim Hortons

150-4th Avenue SE
204-745-3461

CLEARWATER

Clearwater Country Market

8-36 MB-342
204-873-2689

Clearwater Junction Restaurant

33 Boundary Trail
204-873-2623

CRYSTAL CITY

Just BEECUZZ Café

210 Broadway Street
204-873-2150

CC Bistro and Bar

205 Broadway Street
204-873-2515

CYPRESS RIVER

Anderson Family Farm

204-743-2154

Cypress Motor Inn

139 Railway Avenue
204-742-2119

ELIE

Tim Horton's

9 PR 248 N
204-353-4101

ELM CREEK

Elm Creek Café

26 Main Street N
204-436-2256

Ma's Drive In

Highway 2
204-436-2345

The Wooden Spoon

Highway 2
204-436-3390

EMERSON

Pho Gia Thanh Restaurant

102 Church Street
204-373-2499

GLENLEA

Prairie Berry

2385 Andrechuk Road
204-226-7425

YOU GOTTA EAT HERE

HOLLAND

Cultured Herb
118 Broadway Street
204-526-2700

Hollander Motor Inn
101 Broadway Street
204-526-2191

LA RIVIERE

Siggi's Restaurant
114 Railway Avenue
204-242-3472

LETELLIER

Barnay's Restaurant
21-2nd Avenue W
204-737-2249

MACGREGOR

Hampton Café
67 Hampton Street E
204-685-3199

MANITOU

Greg Nadin's Burger Shack
Highway 244 & Highway 3
204-242-2778

Manitou Bakery & Coffee Shop
409 Main Street
204-242-2144

TT's Return Restaurant
304 Main Street
204-242-2830

Spotlite Chinese Food
412 Main Street
204-242-2195

MIAMI

The Station Bar & Grill
503 Norton Avenue
204-435-2535

MORDEN

Bella's Castle Restaurant & Tea Room
572 Stephen Street
204-823-0810

Big Oak Farm
204-822-8288

Boston Pizza
215 La Verendrye Boulevard
204-822-3222

Chicken Chef
479 Stephen Street
204-822-5457

Coffee Culture Café
301 Stephen Street
204-822-9422

Dairy Queen
650 Thornhill Street
204-822-5568



Annajo's Bistro

Homemade meals and baked goods
for any time of day!

289 Main Ave, Plum Coulee
(204) 829-3578

Facebook: Annajo's Bistro



George's Kitchen & Ice Cream
802 Thornhill Street
204-822-6166

Ichkaben Doner Kabab Restaurant
204-384-8981

Kitchen of Spices
431-774-0425 e W
204-239-0378

Resturante Dos Ban deras
204-822-6045

Lam's Lucky Restaurant
321 Stephen Street
204-822-3982

Little Caesars
1-76 T hornhill Street
204-822-8100

Marathon Pizza
204-822-6228

McDonald's
A-25 T hornhill Street
204-822-5599

Morden Motor Inn
780 T hornhill Stree t
204-822-6272

Subway
610 T hornhill Street
204-822-6463

WangDao Bistro
282 Loren Drive - Unit 5
204-384-9264

MORRIS

Bill's Famous Pizza
655 Main Street S
204-746-6229

Burke's Roadhouse on 75
355 Main Street S
204-746-2222

Chicken Chef
133 Main Street
204-746-3633

George's Burgers & Subs
135 Boyne Avenue W
204-746-2423

Kam Loon Restaurant
119 Main Street NW
204-746-6575

Santa Lucia Pizza
111 Main Street
204-746-2336

Subway
1-116 Main Street S
204-746-6685

NOTRE DAME

Big Al's Burgers
164 Notre Dame Avenue W
204-248-2343

Chen & Gan's Kitchen
204-248-2012

OAKVILLE

Stooks Restaurant
116-2nd Street
204-267-2222

PILOT MOUND

Haw's Family Restaurant
123 Broadway Avenue W
204-825-2338

Home Bakery
132 Broadway Avenue
431-736-2669

Call-Inn's Hotel
125 Broadway Avenue E
204-825-2800

Yogi's Esso
204-825-2133

PLUM COULEE

Annajo's Bistro
289 Main Avenue
204-829-3578

Meadows Grill
50 Highway Avenue
204-542-9021

Sunset Diner
48 Highway Avenue
204-829-3434

PORTAGE LA PRAIRIE

A & W
40-24th Street NW
204-857-8336

Aalto's
2401 Saskatchewan Avenue W
204-857-9745

Bill's Sticky Fingers
210 Saskatchewan Avenue E
204-857-9999

Boston Pizza
2180 Saskatchewan Avenue W
204-239-8200

Burger King
2208 Saskatchewan Avenue W
204-239-8200

Burnside BBQ
204-871-4198

Café on Prince
206 Prince Avenue
204-240-7010

Chicken Chef
1310 Saskatchewan Avenue W
204-239-0101

Chronic Tacos
237 E Saskatchewan Avenue
204-239-4714

Dairy Queen
200 Saskatchewan Avenue W
204-857-6047

Dick's Café
134 Saskatchewan Avenue E
204-857-4241

Domino's Pizza
1810 Saskatchewan Avenue W
204-857-5757

Great Wall Chinese Restaurant
324-5th Avenue NW
204-857-6720

YOU GOTTA EAT HERE

Jimmy's

1746 Saskatchewan Avenue W
204-239-0378

KFC

1275 Saskatchewan Avenue W
204-857-5321

Lakeshore Restaurant & Bar

Portage Golf Club
204-857-5686

Lita's Station

904 Saskatchewan Avenue E
204-240-1397

Little Caesar's

302 Saskatchewan Avenue E
204-239-5530

Manitoba Dining Hall

Days Inn — Highway 1
204-857-9791

Mary Brown's Chicken

1101 Saskatchewan Avenue W
204-692-1688

May Mei's

116 Saskatchewan Avenue E
204-857-4555

McDonald's

25-25th Street NW
204-857-6893

Mole Guacamole

177 Saskatchewan Avenue W
204-692-1777

Mr. Mikes Steakhouse Casual

2273 Saskatchewan Avenue W
204-239-5299

Om Indian Cuisine

190 River Road - Unit 5
204-240-2442

Oriental Pearl

10 Saskatchewan Avenue W
204-857-6895

Over the Coals

232 Saskatchewan Avenue E
204-239-4477

Pizza Hotline

315 Saskatchewan Avenue W
204-856-2222

Popeye's Louisiana Kitchen

2275 Saskatchewan Avenue W
204-239-5055

Season's Family Restaurant

1943 Saskatchewan Avenue W
204-856-1077

What's The Scoop

204-239-8555

Subway (East)

315 Saskatchewan Avenue E
204-239-4338

Subway (West)

50-24th Street NW
204-239-0028

Tavern United

2401 Saskatchewan Avenue W
204-857-9745

Tim Horton's

550 Saskatchewan Avenue W
204-857-5222

Tim Horton's (West)

2450 Saskatchewan Avenue W
204-239-1215

Tornado's Restaurant & Lounge

1107 Saskatchewan Avenue W
204-857-9300

Unc's Diner

Highway 1 East
204-856-7077

RATHWELL

Dayner's Den

204-749-2324

The Happy Plate

Highway #2 & #244

ROSEISLE

Roseisle Community Grocery

204-828-3479
100-1st Avenue N

SOMERSET

GG's Drive Inn

103-3rd Street
204-744-2035

Somerset Food Bar & Lounge

306-3rd Street
204-744-2042

STEPHENFIELD PROVINCIAL PARK

Sparks Drive Inn

South of the park entrance
204-828-3655

ST CLAUDE

Oriental Chef

220 Cypress Avenue
204-379-2727

Tallboys Grill & Pub

Highway 2
204-379-2491

ST JEAN BAPTISTE

Bistro 758

166 Caron Street
204-758-3550

SWAN LAKE

Swan Lake Hotel Restaurant, Bar & Beer Vendor

26 Lorne Avenue
204-335-2300

The Barrel Pub & Grill

204-248-2276

TREHERNE

Delahunt Golf & Country Club

204-723-2502

Ho Wah Garden Restaurant

276 Railway Avenue
204-723-8120

L & J's Drive Inn

Highway 2
204-723-2795

YOU GOTTA EAT HERE

WINKLER

A&W

920 Main Street
204-325-5332

Charley B's Classic Grill & Ice Cream Parlour

850 Main Street
204-331-3663

Chicken Chef

Main & Mountain
204-325-9380

Chat Masola

Unit F1 - 725 Main Street
431-349-1200

Cucina Filipi nas Rice & Noodles

573 Main Street
204-384-7890

Dairy Queen

785 Main Street N
204-325-7886

Dimi's Doner Kebabs and Gyros

307 Manitoba Road
204-362-6844

Dave's Dine 'N Dash

951 Southview Drive
204-362-2239

Del Rios

644 Main Street
204-325-5273

DJ's Family Restaurant

PTH 14
204-325-8080

Domino's Pizza

585-1st Street
204-331-3009

Flavours of Mexico

370 Main Street
204-325-1655

Iceburg Drive-In

110-15th Street
204-325-7474

KFC

631 A Hwy #14
204-220-1803

King's Deli

725 Main Street
204-384-0808

King Pinz Pub & Grill

1765 Diamond Drive
204-325-7736

McDonald's

750 Norquay Drive
204-325-4143

Meimei Chinese Restaurant

235 Main Street
204-325-9586

Mulligan's Restaurant & Lounge

400-15th street
204-325-9499

Outpost Grill

Junction Highway 3 & 14
204-331-4486

Pizza Hut

155 Cargill Road
204-331-1453

Ralph's German Restaurant

802 Main Street
204-325-9500

Smitty's Restaurant & Lounge

851 Main Street
204-325-8799

Subway

654 Main Street
204-325-7868

Szutu's Chinese Restaurant

268 First Street
204-325-6818

Taco Time

1525 Diamond Drive
204-331-5201

That Burrito Place

204 Main Street
204-325-5025

Tim Horton's

880 Main Street
204-331-1525

Toppers Family Restaurant

495 Main Street
204-325-5033

Triangle Oasis Restaurant

880 Centennial Street
204-325-8922

Twister's Family Restaurant

400 Memorial Drive
204-325-1957

Valley Bakery

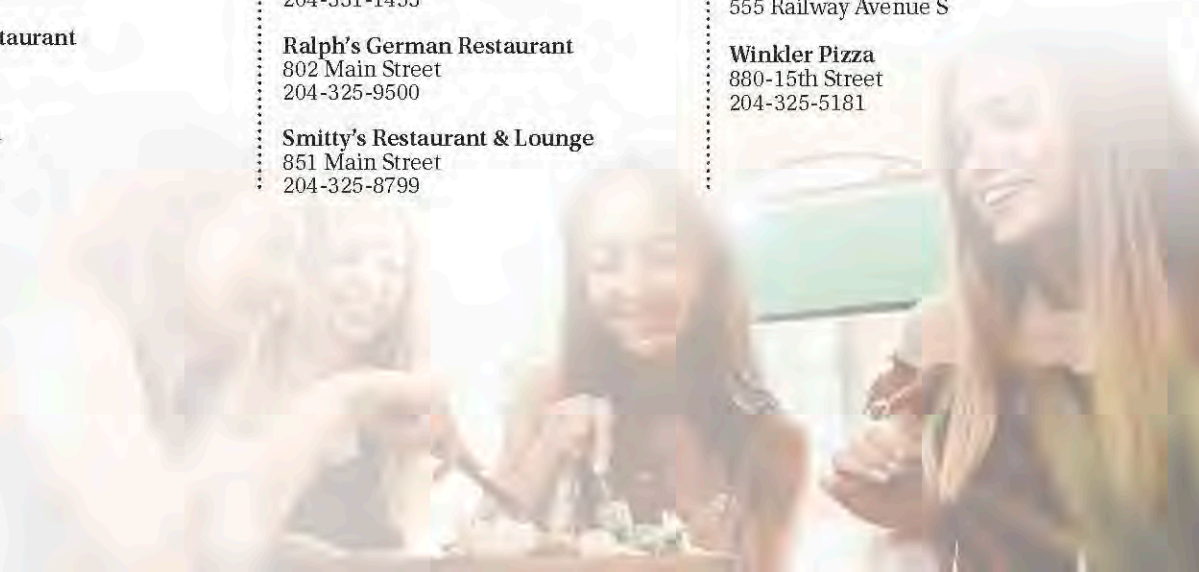
251 Main Street
204-325-8861

Whitecap Coffee

555 Railway Avenue S

Winkler Pizza

880-15th Street
204-325-5181



In-store brewing now available



204-822-6069 or gordmaddock6@gmail.com

Morden, MB

www.brewnsip.com

Celebrating 20 Years!

HELGA ROSE HOEPPNER

INCOME TAX SPECIALIST

Personal • Small Business & Farm
Truckers • Corporate • E-File

2-156 BOYNE AVENUE W MORRIS, MB

PH: 204-746-RITS (7487)

FX: 204-746-7406 EMAIL: rits@mymts.net



INCOME TAX / ACCOUNTING

Providing a Positive Perspective & Pleasant Personality

PORTAGE EX
150



Portage Industrial Exhibition Association

JULY 5-7

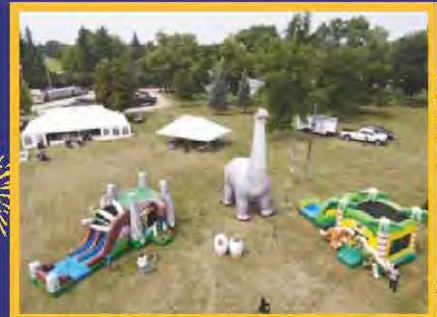
Island On The Prairies

Live Music
Midway Rides
Children's Entertainment
Domestic, Horse & Livestock Competitions

Beautiful Quiet Campgrounds Available From May-Oct

MNP Exhibition Hall & Office Boardroom
Rental available year-round
Other facilities & grounds available to rent in the summer months

WWW.PORTAGEEX.COM





Best
Western
PLUS

Winkler | Morden

Work hard & play even HARDER with our

GOLF STAY & PLAY PACKAGE

PACKAGE 1*

1 Person - 2 Rounds of 18 Holes with cart

Package includes:

- *Complimentary breakfast at the hotel
- *2 small buckets of driving range balls
- *2 drinks on the course (1 per round)

Value: \$310.00

Discounted Rate: \$219.99 (Plus Tax)

PACKAGE 2*

2 People - 1 Round of 18 Holes each, with cart

Package includes:

- *Complimentary breakfast at the hotel
- *2 small buckets of driving range balls
- *2 drinks on the course

Value: \$310.00

Discounted Rate: \$229.99 (Plus Tax)

PACKAGE 3*

2 People - 2 Rounds of 18 Holes each, with cart

Package includes:

- *Complimentary breakfast at the hotel
- *4 small buckets of driving range balls (1 per round)
- *4 drinks on the course (1 per round)

Value: \$490.00

Discounted Rate: \$349 (Plus Tax)

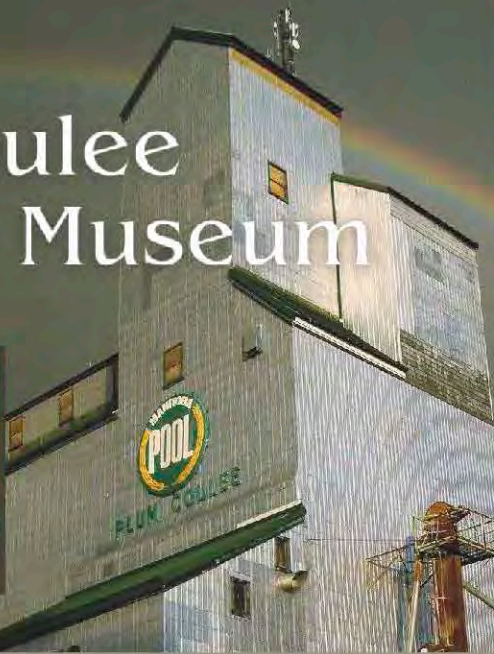
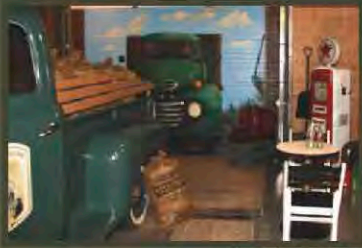
For More Details, Please Call/Email:

BWP Winkler (204) 331 1400
frontdesk@winklerbw.ca

BWP Morden (204) 822 6116
frontdesk@mordenbw.ca

Valley Bowl Stay & Play Package Also Available!

Plum Coulee Elevator Museum



OPERATIONS

July 2 to August 31

Tue - Sat 10 am - 4 pm

June and September

Weather permitting
we will open for tours
by appointment.

For Tour Appointments, Call:

Dorothy: (204) 829-3948;

cell (204) 362-8619

or Linda: (204) 829-7748

288 Main Ave, Plum Coulee, MB R0G 1R0



OFF THE RAILS LIQUIDATION

390 1st St Winkler

NEW PRODUCTS EVERY DAY!

Fresh From Our Farm



Just one bite and you already know — nothing beats the fresh, crisp taste of Manitoba fruit and vegetables direct from the orchards and acreages where they are grown. The Central region offers multiple avenues to connect directly with the producers that are feeding our families and have your pick of the freshest produce available. From opportunities to harvest the berries yourself from the vine to the farmer's market where those wares are prepared as pies and preserves, if you are craving fresh food, direct from the farm, we've got you covered.

ALTONA

Berry Hill Farms 204-324-8083

CARMAN

Dufferin Market Gardens 204-745-3077

Prairie Adventure Farm 204-745-2678

CYPRESS RIVER

Anderson Family Farm 204-535-2261

FRIEDENSFELD

Schmidt Farms Ltd 204-325-7251

GLENLEA

Prairie Berry 204-226-7425

GRETNA

Border Farms 204-327-5573

MORDEN

Big Oak Farm 204-822-8288

D&M Farms 204-822-6761

Shady Lane Saskatoons 204-822-3323

OAKVILLE

The Little Red Barn 204-267-2421

PORTAGE LA PRAIRIE

Connery's Berry Farm 204-428-3924

Mayfair Farm 204-857-4581

Munro's U Pick 204-428-3100

Riverbend Orchards 204-870-1140

ROLAND

Graham's Groves 204-745-6000

SOMERSET

Somerset Farmers Market

Wednesdays, 4:30-6 July - September

TREHERNE

Country Side Saskatoons 204-749-2232

WINKLER

Garden Valley Vegetable Growers 204-325-8484

Heartland Fresh Pac 204-325-6948

The Potato Store 204-331-3150

Wendy's Strawberry U-Pick 204-325-9017

Winkler Covenant Growers 204-325-5999

Farmers Markets

ALTONA

July to September
Saturdays 10:00am - Noon
Main Street beside Chicken Chef
@altonafarmersmarket
204-324-6259
altonafarmersmarket@gmail.com

CARMAN

June to September
Fridays 4:00pm - 6:30pm
Dufferin Agricultural
Society Fairgrounds
204-745-3077

CLEARWATER

September
During the Harvest Moon Festival
www.harvestmoonfestival.ca

CRYSTAL CITY

June to September
Tuesdays 5:00pm - 6:00pm

CYPRESS RIVER

July to August
Saturdays 10:00am - Noon
163 Cypress Avenue

HOLLAND

July to August
Wednesdays 4:30pm - 6:00pm
Holland Agricultural Grounds
theresa@tntharness.com

MORDEN

June to October
Thursdays 4:00pm - 6:00pm
Corner of Stephen Street & 8th Street

OAKVILLE

June to August
Thursdays
Oakville Community Centre
204-267-2192
rkwt@outlook.com

PILOT MOUND

June to September
Thursdays 5:00pm - 6:00pm

PORTAGE LA PRAIRIE

Year Round
Saturdays 10:00 - 2:00pm
Wednesdays 3:30pm - 6:00pm in summer
Saskatchewan Avenue across from the Dairy Queen
204-240-7541

TREHERNE

July to August
Thursdays 4:00pm - 5:30pm
Cottonwood Park
204-723-2774

WINKLER

June to October
Tuesdays 4:00pm - 6:00pm
Winkler Curling Rink



Not Just for Summer

Looking out across the blanket of fresh snow sparkling beneath a cloudless, blue sky beckon you to get outdoors, you'll be grateful for the open spaces and a wide variety of winter recreation in the Central region that will invigorate your soul. Whether you crave the silky swish of skis across fresh powder or your heart beats faster at the thought of snowmobiling the region's miles of groomed trails, we have got you covered. Sure, we are a popular destination for families and guests of all ages during fair weather, but the adventure that awaits you here is not just for summer.

Some may be surprised to discover that the Pembina Valley region defies Manitoba's stereotype as miles upon miles of flat farmland for as far as the eye can see. **Holiday Mountain Ski Resort** at La Riviere has been a popular destination for downhill skiers and snowboarders for 60 years. Featuring two chair lifts and a beginner lift to get you to the top of the hill to challenge the runs at your skill level, you can bring your own gear or rent it on site. Plan to stay a little longer with cozy accommodations in one of 10 chalet-style cabins on site as well as a selection of food and beverage options at one of their two chalet dining rooms or on-site lounge.



Summer's hiking trails through the prairie wilderness of our primarily agricultural lands readily avail themselves for winter recreation and cross-country skiing at multiple sites across the region. The **Boundary Trails/Burwalde Woods Honey Farm**, directly west of the Winkler Bible Camp on Highway 3 has become a popular winter destination with groomed trails. Similarly, Treherne's **Bittersweet Trails** offer 20 kilometres of trails that wind with the landscape across the prairies and through the woodlands offering a unique journey along the shores of the Assiniboine River.





When the snow flies, you can be certain that local **snowmobile enthusiasts** find reason to rejoice. Our region is home to five snowmobile clubs that maintain groomed trails and promote the sport through routes that link several rural communities. Promoting rider safety, route signage, warming sheds and an expansion of trails you are invited to become a member and take part in club activities and rallies, or just to enjoy the trails at your own leisure.

But remember, this hobby is best enjoyed when you stick to the established trails as hazards can be hidden beneath the snow in uncharted territory.

With Canada's national pastime, **hockey** dominating most recreational sports schedules across the Province, you're sure to find a venue to find a venue and team to participate in recreational or competitive leagues in most communities. But if it's just ice time that you're after to enjoy some skating, you will be delighted to discover that in addition to numerous recreation facilities that offer **public ice skating**, seasonally, there are also a number of outdoor rinks that emerge through the efforts of community volunteers and local recreation departments. In Portage la Prairie, the skating trail on Crescent Lake is regularly maintained throughout the winter and includes a warming shed and rest areas along the route.

New villages of sports people begin to form each winter when our region's lakes hibernate beneath a sheet of ice at the peak of the season. The huts roll out from shore across the seasonal access to facilitate **ice fishing** when the temperatures dip well below zero degrees. Just as with those that head out in their boat over the summer, everyone has their favorite spot and their own time-tested strategies to catch the big one. Local outfitters and sports shops can help provide you with some tips and tools of the trade before you head out to hook your prize catch.





- Pool, Hot tub, Steam Room
- Onsite Restaurant + Lounge
- Theme Room
- Cold Beer Store
- Conference Center

 204-325-4381

 qualityinnwinkler.com

www.rmofvictoria.com



Puttin' on the Prairies



Rural Municipality Victoria

RM of Victoria



Emmanuel Historic Church
Holland



Holland Ag Society
Campgrounds



Cypress River
Campground



Prairie Wind Music
Festival



Cypress River United
Church



Orthodox Church
Holland



Windmill Park
Holland



Santa Claus Parade
Holland



Wayside Park
Cypress River



Tiger Hills Arts Association
Holland



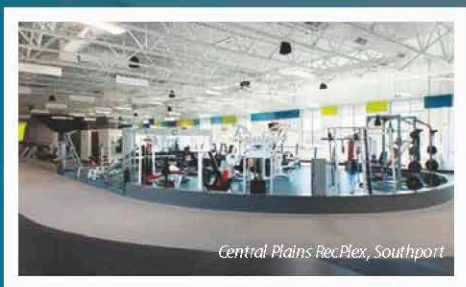
Puttin' on the Prairies Mini
Golf Holland



Sand Hills

Make It A Weekend

Explore at **Southport!** Southport has facilities to help you have fun and live a healthy and active lifestyle. In our recreation centre, **Central Plains RecPlex**, you can reach new heights on our 9m rock climbing wall, enjoy a classic game of bowling, or take things up a notch and hit the gym in our large fitness area with cardio and weight equipment. Make your visit a weekend getaway and book your stay in Barker Suites. Come visit our website at southport.ca to learn more.



Central Plains RecPlex, Southport

Central Plains
RecPlex

MAKE IT A WEEKEND

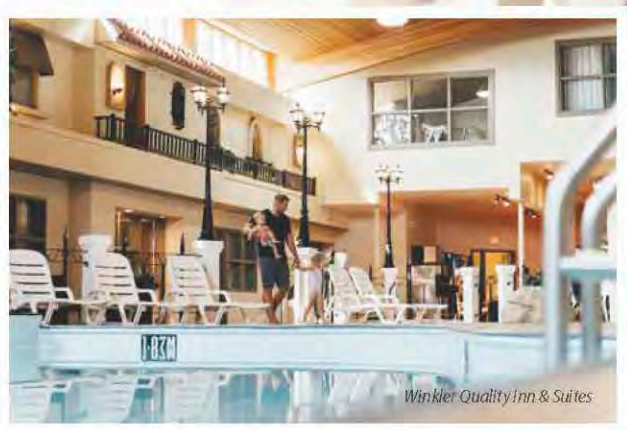
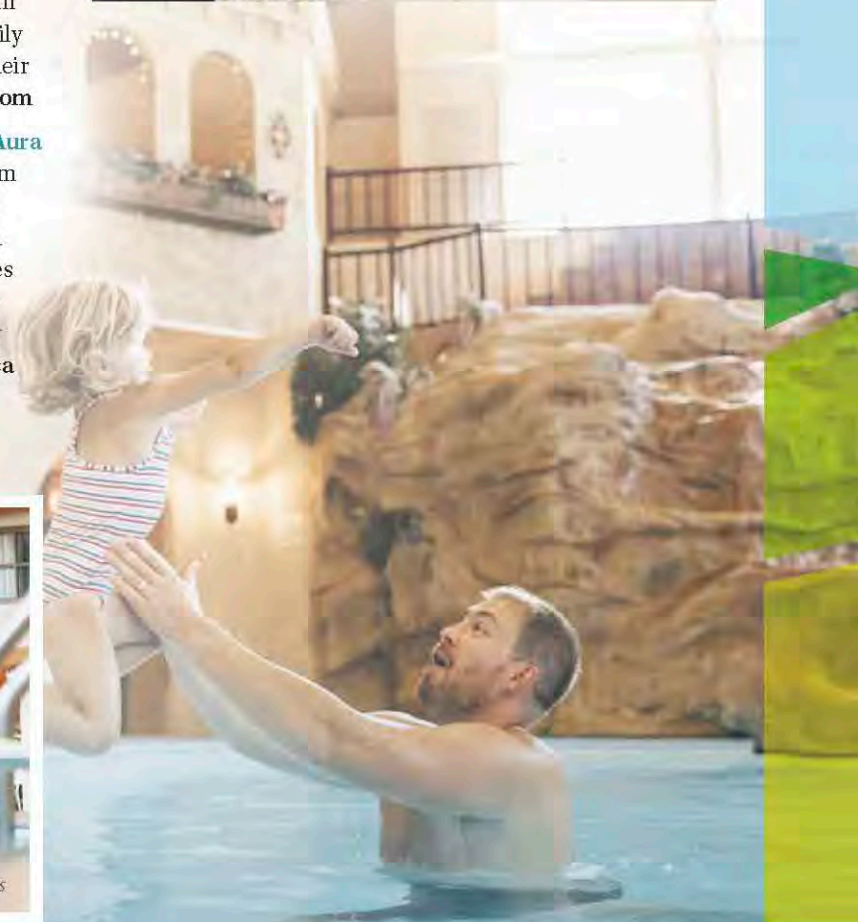
Set in the rolling hills and natural scenery of Swan Lake you will find **Prairie Paradise Retreat**, a Bed & Breakfast and spa set on 160 acres of literal paradise in the Manitoban prairies. This retreat is perfect for the outdoors enthusiast with hiking, bird watching, quadding, horseback riding, golf and fishing nearby. In the winters you can enjoy hunting, tobogganing, snowmobiling, and skiing. Your day starts with a big country breakfast to fuel you for all of your adventures! End your day with a relaxing dip in their seasonal pool or with a few spa treatments. Retreat packages are available. Call 204-836-2024 or email 555paradise333@gmail.com to book your next vacation.

Find your home away from home at the **Winkler Quality Inn & Suites**. Located in the heart of the City of Winkler, close to a variety of local attractions, this full-service hotel can accommodate families of any size, including your furry family members! Make the most of your stay by booking one of their Stay N' Play Packages. Learn more at qualityinnwinkler.com

This historic beauty, built in 1898 as a church, is now **Bell Aura Bed, Breakfast & Bistro**, furnished in antiques and art from top to bottom in Carman. This serene and secluded B&B is the perfect spot for reconnecting with an on-site yoga and meditation studio, many cozy reading nooks, lounges and sitting rooms. A delightful and nutritious breakfast is created from scratch and included with your stay. They can accommodate all dietary needs. Visit www.bellaura.ca to learn more.



Central Plains RecPlex, Southport



Winkler Quality Inn & Suites

Accommodations

Hotels & Motels

ALTAMONT

Altamont Hotel
204-744-2246

ALTONA

Altona Hotel
204-324-5241

Four Winds Motel
204-324-5305

CARMAN

Blue Crescent Hotel
204-542-0732

Carman Motor Inn
204-745-3733

CYPRESS RIVER

Cypress Motor Inn
204-743-2119

ELIE

Elie Hotel
204-353-2340

EMERSON

Maple Leaf Motor Inn
204-373-2594

Emerson Hotel
204-373-2050.

HEADINGLEY

Headingley Motor Inn
204-888-8865

Motor 6
204-896-9000

HOLLAND

Hollander Hotel
204-526-2191

LA SALLE

La Salle River Inn
204-736-4900

LA RIVIERE

Holiday Mountain
204-242-2172

LETELLIER

Prairie's Edge Motel
204-737-2699

MANITOU

Manitou Motor Inn
204-242-2830

MORDEN

Best Western Plus
204-822-6116

Morden Motor Inn &
River Side Village
204-822-6272

Star Motel
204-822-4494

Super 8 by Wyndham
204-822-2003

Traveller's Inn
204-822-4515

MORRIS

Burke's Motor Inn
204-746-2222

Santa Lucia Hotel
Bar & Grill
204-746-2335

Morris Stampede Inn
204-746-6879

NOTRE DAME

Grenier Mini-Motel
204-248-2276

OAKVILLE

Oakville Motor Hotel
204-267-2533

PILOT MOUND

Call-Inn's Hotel
125 Broadway Avenue E
204-825-2800

PLUM COULEE

The 829 Inn
204-325-2528

PORTAGE LA PRAIRIE

Barker Suites
100 Musketeer Road E
Southport
204-428-6030

Canad Inns
Destination Centre
204-857-9745

Portage Days Inn
by Wyndham
204-857-9791

Hi-Way Motel
204-857-8771

Mynarksi House
250 Centenaire Drive
Southport
204-428-6030

Sunset Motel
204-857-7031

Super 8 by Wyndham
204-857-8883

Westgate Inn Motel
204-239-5200

Yellow Quill Motel
204-857-3086

SOMERSET

Somerset Hotel
204-744-2112

ST. CLAUDE

Tallboys Grill & Pub
204-379-2491

ACCOMMODATIONS

ST. JEAN

St. Jean Hotel
204-758-3591

ST. LUPICIN

Morning Vale Inn
204-248-2739

TREHERNE

Birch Motel
204-723-2535
The Local
204-723-2323

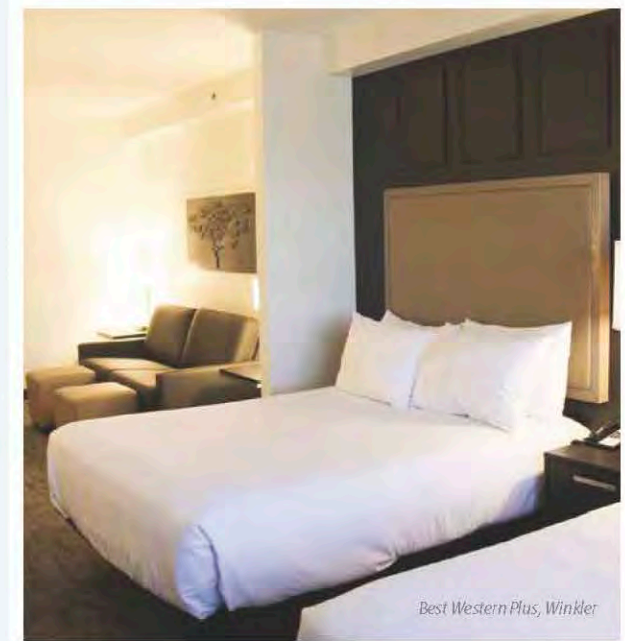
WINKLER

Best Western Plus
204-331-1400

Days Inn & Suites
by Wyndham
204-325-8888

Quality Inn & Suites
204-325-4381

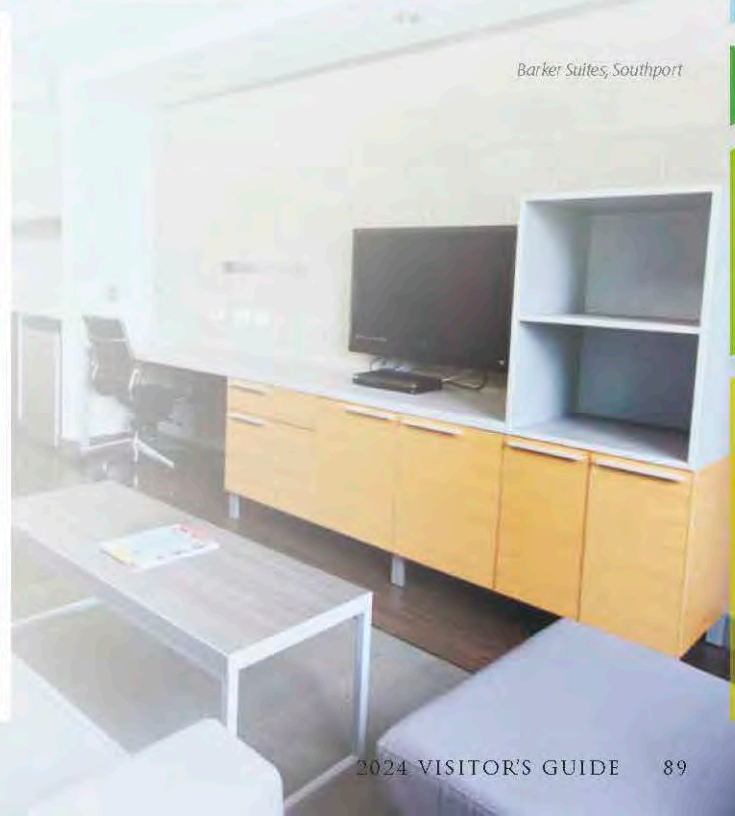
Triangle Oasis Motel
204-325-4348



Best Western Plus, Winkler



Altona Hotel



Barker Suites, Southport

Bed & Breakfasts

ALTONA

Inn Among The Willows
204-324-4224

ARDEN

Main Beach Farm B&B
204-368-2240

AUSTIN

Henderson Hollow B&B
204-466-2857

BRUXELLES

Carelsfield Inn B&B
204-526-7430

CARMAN

Bell Aura B&B
204-745-6787

DELTA BEACH

Blue Heron View B&B
204-857-7454

ELIE

L'Auberge Clemence B&B
204-353-2183

HASKETT

Wakerobin B&B
204-325-8453

LETELLIER

Fraser House B&B
204-737-2284

MACGREGOR

Hampton B&B
204-685-3199

Maple Grove Heritage
Estate B&B
204-685-2483

MORDEN

A Rocha Prairie Canada
204-246-2059

A Wee Bit of Heaven B&B
204-822-6908

Bella's Castle
204-823-0810

Siemens B&B
204-822-1973

MORRIS

Quiet Pines B&B
204-746-8926

NEUBERGTHAL

The Herdsman House
204-324-1612

The Morning Dove
204-304-1664

PILOT MOUND

Rock Lake Suite
Rock Lake —
Municipality of Louise
204-825-2536

Currie Country
Living B&B
204-245-9051

PLUM COULEE

Copper Studio
311 Main Avenue
204-332-1866

PORTAGE LA PRAIRIE

Farm Away Retreat
204-870-1564

ST. FRANCOIS XAVIER

Assiniboine Trail
Guest House
204-864-2792

Whitehorse Escape B&B
204-864-2119

STE. AGATHE

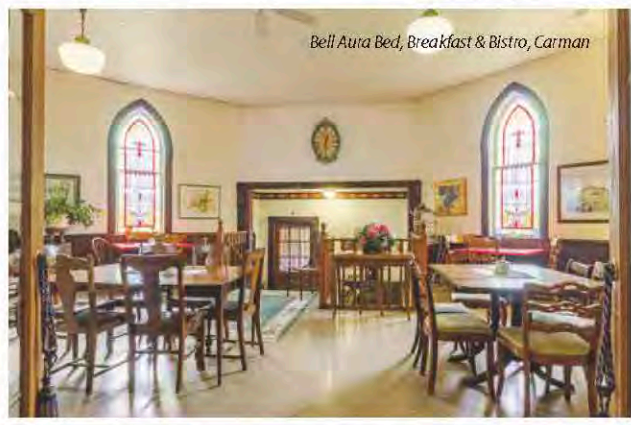
Gite Maison pres
de la Rouge B&B
204-882-2493

SWAN LAKE

Prairie Paradise Retreat
(Day Spa & B&B)
204-836-2024

Swan Lake Farm 57
204-526-4570

The Bunkhouse
204-526-0418



Bell Aura Bed, Breakfast & Bistro, Carman

Cabins & Cottages

AUSTIN

Squirrel Creek
Getaway Cabin
204-637-2445

CLEARWATER

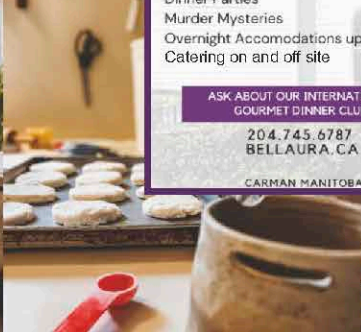
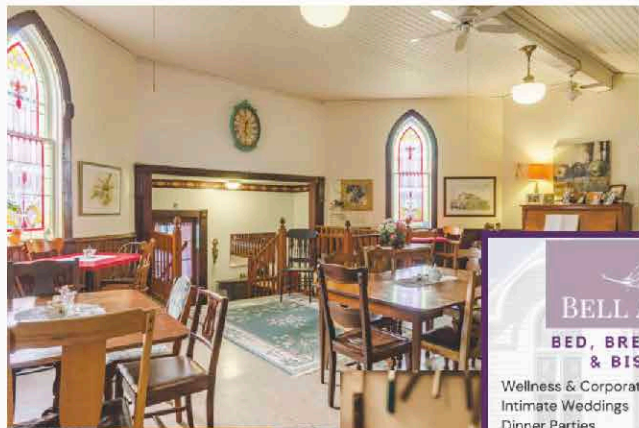
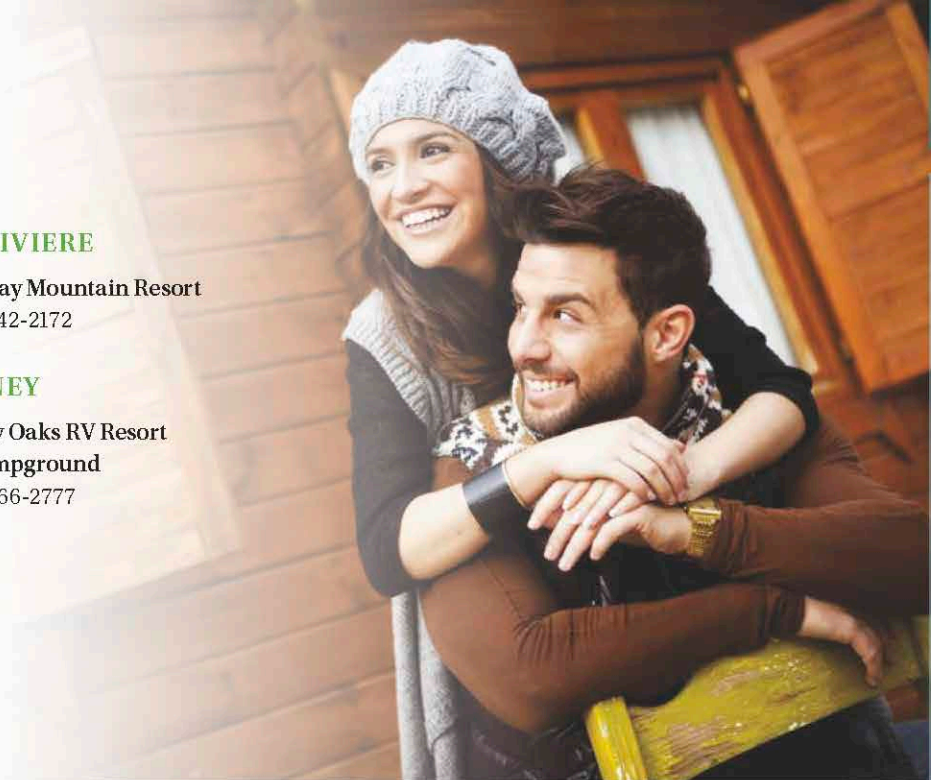
Harvest Moon Eco-Cabins
204-873-3858

LA RIVIERE

Holiday Mountain Resort
204-242-2172

SIDNEY

Shady Oaks RV Resort
& Campground
204-466-2777




BELL AURA
BED, BREAKFAST & BISTRO

Wellness & Corporate Retreats
Intimate Weddings
Dinner Parties
Murder Mysteries
Overnight Accommodations up to 25 people
Catering on and off site

ASK ABOUT OUR INTERNATIONAL
GOURMET DINNER CLUB!

204.745.6787
BELLAURA.CA

CARMAN MANITOBA



Plum Fest



August 16 - 18, 2024

Plum Coulee, Manitoba

FREE FAMILY FUN!

Come for the free children's activities, free stage entertainment, Old Time Dance, & much much MORE!

plumfest.com  @plumfest

Plum Coulee Chamber of Commerce

Experience Plum Coulee

Plum Fest: August 16 - 18, 2024

Join us for our annual parade, kids activities, artisan market, and more!

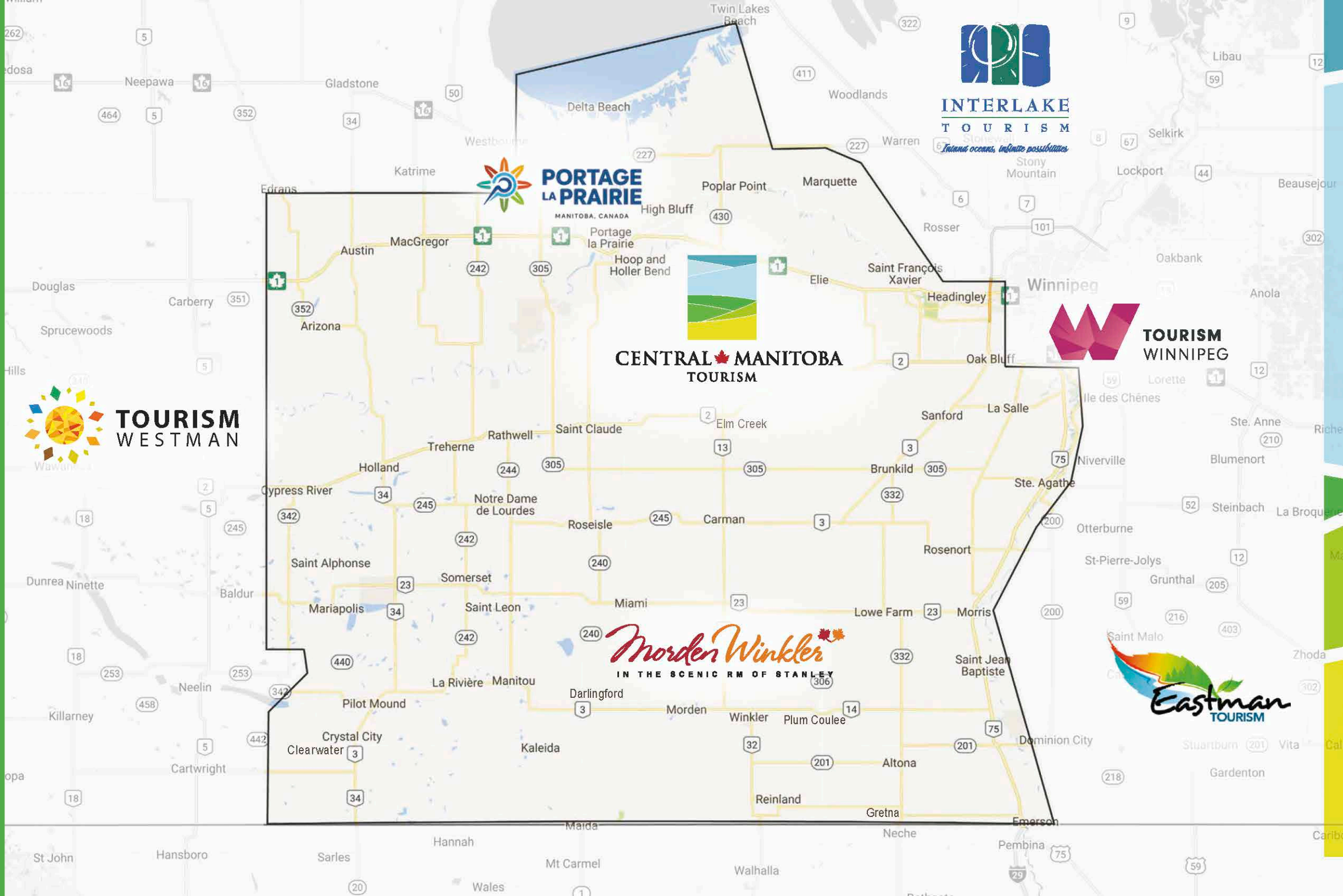


There's So Much to Explore

We've shared many of the highlights of the Central Manitoba region in the pages of this guide. We encourage you to find out what adventure awaits for you in each of our communities and invite you to take time to enjoy the surprise discoveries along your way.

Once you've experienced them all, you may also want to see what other great attractions and events that Manitoba has to offer. Check out their websites and visitor guides to see what you can discover through

- [Tourism Westman](#)
- [Interlake Tourism](#)
- [Tourism Winnipeg](#)
- [Eastman Tourism](#)
- [Island on the Prairies](#)
- [Explore Morden Winkler](#)





www.altona.ca
[@townofaltona](https://twitter.com/townofaltona)



Manitoba Sunflower Festival

July 26 - 28, 2024



Adventure awaits!



CENTRAL  MANITOBA
TOURISM



Visit
www.centralmbtourism.ca
for a full listing of events
across the region.

 @CentralMBTourism  @CMBTourism